



COLLECTION
HOT TUB
AND
SWIM SPA



CONTENTS

page

4	— The best moment of the day	64	— J-200™ Collections	104	— Professional Collections
6	— Brand	68	— J-280™	108	— Spa Pack
8	— Story	69	— J-275™	110	— Virtus Pro
10	— Sensational Wellness™	70	— J-245™	111	— Enjoy Pro
12	— Performance	71	— J-235™	112	— Virginia Pro
14	— Versatility	72	— J-225™	113	— Sienna Pro
16	— Hydromassage	73	— J-215™	114	— Alimia Pro
22	— Clean Water	74	— J-210™	118	— Swim Spa Collections
24	— Quality	78	— Design Collections	122	— J-19 PowerPro™
26	— Innovation	83	— Virtus	123	— J-19 PowerActive™
28	— Collections	84	— Profile	124	— J-16 PowerPro™
32	— J-500™ Collections	85	— Santorini	125	— J-16 PowerActive™
34	— J-575™	86	— Delos	127	— J-13 PowerPlay™
38	— J-400™ Collections	87	— Delfi	128	— Colours & finishes
42	— J-495™	88	— Sky lounge®	134	— Service & aftercare
43	— J-485™	89	— Unique		
44	— J-475™	90	— City™ Spa		
45	— J-445™	91	— Alimia		
46	— J-435™	94	— Lodge+ Collections		
47	— J-425™	98	— Lodge+ L		
50	— J-300™ Collections	99	— Lodge+ M		
54	— J-385™	101	— Lodge+ S		
55	— J-375™				
56	— J-365™				
57	— J-355™				
58	— J-345™				
59	— J-335™				
60	— J-325™				
61	— J-315™				

THE BEST MOMENT OF THE DAY

Maybe you've spent hours in a successful meeting,
Or played a gruelling five-a-side football match with your friends.
Perhaps you've been on your feet all day shopping,
Or out travelling to explore wonderful new locations.
All these things require effort.

They are the exciting yet small adventures of everyday life.
The ones that give you real pleasure, purpose and a
feeling of fulfilment.

As great as they are they can also be tiring.
Now is the time to turn an exceptional or a tiring day
into a perfect one.

The moment that refreshes you to face new challenges tomorrow.
Your Hot Tub Jacuzzi®.

It's not just a matter of hydromassage technology,
we're talking about real science that produces
authentic, all-round well-being.

It's the best moment of the day.





JACUZZI BROS.
INC.

JACUZZI® BRAND IS AN ICON

BRAND

Renowned for its performance reliability and ease of use, we set the standard by which all Hot Tubs are measured. While imitation may be the sincerest form of flattery, only 65 years of innovation can produce Hot Tub designs made to the demanding standards of the Jacuzzi® Brand.

Jacuzzi® Brand products are manufactured in 5 countries, enjoyed in more than 100 countries worldwide, and employ thousands of people around the world. Representing decades of innovation, design, performance and ease of use, the Jacuzzi® Brand is trusted by millions of customers globally.



Hot Tub



Swim Spa



Showers



Bathtubs



Saunas



Commercial



BRAND STORY

When the seven Jacuzzi brothers emigrated from Italy to the United States, they had no idea that a pump they designed for orchards would revolutionise hydrotherapy in the home. And while the family's critical need to change the life of a child triggered this therapeutic invention, a desire for wellness pioneered an industry.



Jacuzzi® create and market the world's first integrated whirlpool bath, the 'Roman'



1960

New features that can be used indoors and outdoors are introduced such as waterfalls



1980

1956

Introducing the Hot Tub: Candido Jacuzzi invented the J-300® pump, the first portable hydrotherapy device to be applied to a household bathtub

1970



First self-contained family-size Hot Tub is created

1990



First outdoor Hot Tub range



The experience of total immersion and top performance for a family Hot Tub



2000

New models for the hospitality industry



2018

New collection J-300™



2020

2010



Jacuzzi® takes Italian Design to the rest of the world

2019



Jacuzzi® Swim Spa



SENSE/ATIONAL — WELLNESS™



VIRTUS
Alkamuri Posh Hotel&Spa
Italy

SENSATIONAL WELLNESS™



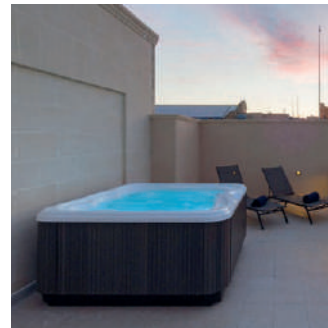
Sensational Wellness™ is the new partnership programme dedicated to the hospitality world which, thanks to an extensive, high-value offering, allows all hotel, spa and resort operators as well as prestigious venues to grow their business and enhance their visibility, thanks to the added value of the wellness product solutions, consulting, support and communication provided by Jacuzzi®.



J-210™
Bassa Maina Villas & Suites
Greece



City™ Spa
Musae Relais & Spa
Italy



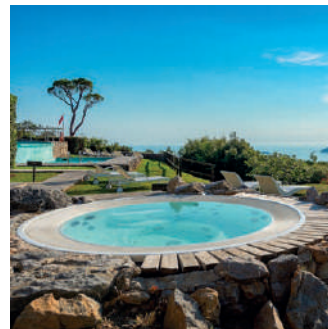
Lodge M
The Duke Hotel
Malta



Santorini Pro
Chalet Salena
Italy



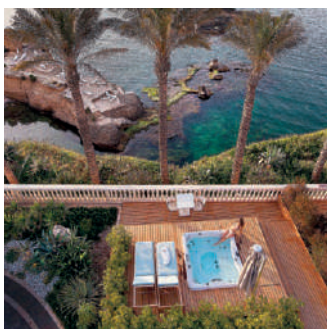
Delfi
Holiday Sky Park
Poland



Alimia Experience
Golfo dei Poeti Relais & Spa
Italy



J-235™
Alps Residence Holiday Service
Osterreich



Lodge L
Grand Hotel Minareto
Italy



Lodge M
Apartments Top View
Croatia



TRAIN LIKE A PRO
WITH A
JACUZZI® HOT TUB



#JacuzziPerformance

Performance

Jacuzzi® premium products support the needs of high endurance athletes and teams who are committed to maintaining and improving their quality of life, both during and beyond their active careers through the power of hydrotherapy.

Whether you're a professional athlete or a weekend warrior, Jacuzzi® products increase your ability to recover, relax and perform, harnessing water's natural ability to heal the mind, body and soul.

The Jacuzzi® Brand proudly partners with endurance athletes and professional teams around the world.



JANET EVANS
Olympian and World Cup
Champion Freestyle Swimmer



MIKE ERUZIONE
Captain of the Gold Medal-
Winning 1980 Winter Olympic
Hockey Team



AMY PURDY
Paralympic Snowboarder



TRACE WORTHINGTON
2X Olympian and U.S. Ski and
Snowboard Hall of Famer



MELISSA STOCKWELL
Paralympian and Former U.S.
Army Officer



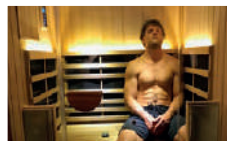
JOEY MANTIA
Olympian and World Champion
Speed Skater



SALLY GUNNELL
Olympic Track Champion



THURL BAILEY
Retired NBA Player and
Inspirational Speaker



STEVE NYMAN
Olympian and World Cup Ski
Racer



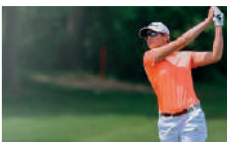
TIM JITLOFF
2X Olympian and U.S. Ski Team
Member



KIMBERLEY MORRISON
Triathlete and Ironman
Champion



JASON LINDSAY
Professional Trainer



CYDNEY CLANTON
LPGA Pro





**THERE'S A
JACUZZI® HOT TUB
FOR EVERY
KIND OF SPACE.**



VERSATILITY

There's a Jacuzzi® Hot Tub for every kind of space

Whether your outdoor or indoor space is generous, compact or somewhere in between, there's a Jacuzzi® Hot Tub to fit. From a lawn fringed patio to a terrace, you can be sure that our ingeniously designed and easy to install range will be right at home. With no need for outdoor plumbing, your Hot Tub can be conveniently installed into an area that best suits the way you live.





Hydromassage research supports the benefits of hydrotherapy for stress, lower back pain, sleeplessness, post exercise recovery, leg cramps, arthritis and fibromyalgia.

HYDROMASSAGE

HYDROMASSAGE

FX-S

FX

FX-R

NX2

FX-LR

MX2

BX

FX-L

RX

PX

FX-D

J-500™ - J-400™ - J-300™

J-300™
EXCLUSIVE

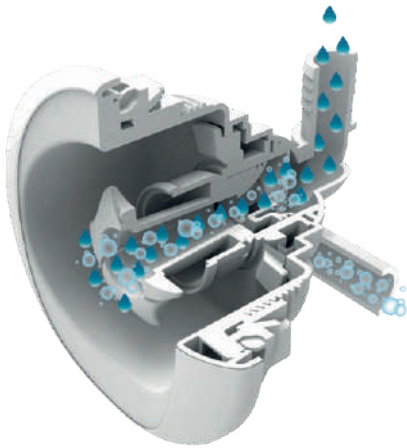
J-400™
J-300™

J-500™
J-400™

J-500™
J-400™

J-500™
EXCLUSIVE

JACUZZI® POWERPRO® JETS COLLECTION KEY



Exclusive Jacuzzi® PowerPro® jet system

Utilising Jacuzzi® Aqualibrium®, the combination of versatile **Jacuzzi® PowerPro®** Jets, and our ergonomically designed seats, our products deliver an adjustable high-flow, low-pressure hydromassage that feels like no other.

Aqualibrium®

The perfect mix of air and water.



The FX therapy seat

The full coverage neck and back seat not only delivers deep, adjustable pressure to relieve chronic aches and pains. The FX-12 seat also targets muscle tension in your calves and feet for a full-body experience.



The RX therapy seat

The RX rotating nozzle in the therapeutic seat offers back and neck support for the perfect hydro-massage.



The MX therapy seat

Recognised as our original Jacuzzi® Jet, the MX Jet seat delivers a concentrated massage especially effective for larger muscles in the lower back.



The PROAIR™ Lounge

The perfect combination of two types of Jacuzzi® PowerPro® Jets, this muscle knot release lounge seat stimulates surrounding tissue. The upper back rotating massage of the FX Rotational Jets eases the tension of the muscles along your neck and shoulders while the rifling action targets the smaller muscle groups of your legs and lower back.





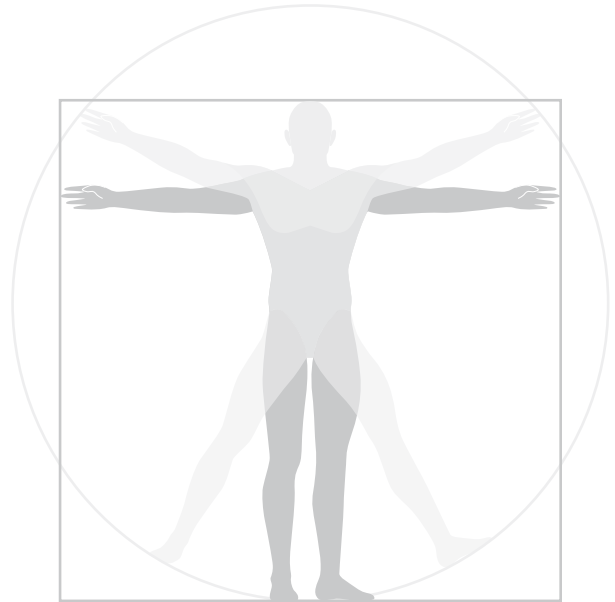
Some of the smallest daily rituals that you enjoy, can be more beneficial than you realize. Following a regular hydromassage routine, can improve your overall well-being by reducing stress and lower back pain, improving sleep and post exercise recovery, and alleviating restless leg syndrome, cramps, arthritis and fibromyalgia.

And it's just as easy to build into your daily routine, as taking time out to enjoy a cup of coffee!



anthropometric dimensions

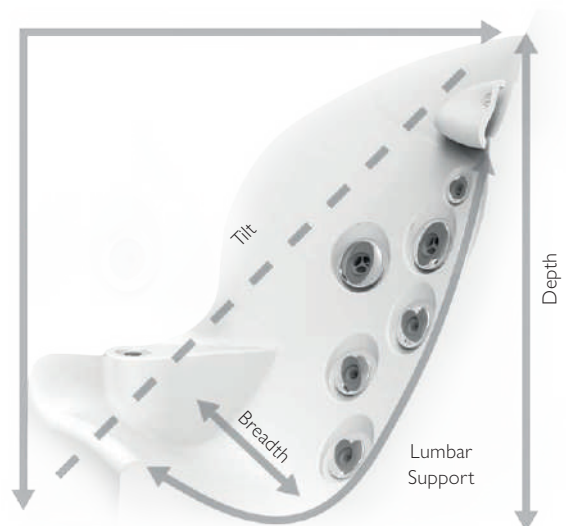
By studying the anthropometric dimensions of the 5th percentile of females and 95th percentile of males, we can design Hot Tubs based on the average dimensions of 90% of the population to deliver a personalized massage.



MUSCLE STRUCTURE JET CONFIGURATION

ergonomic seating

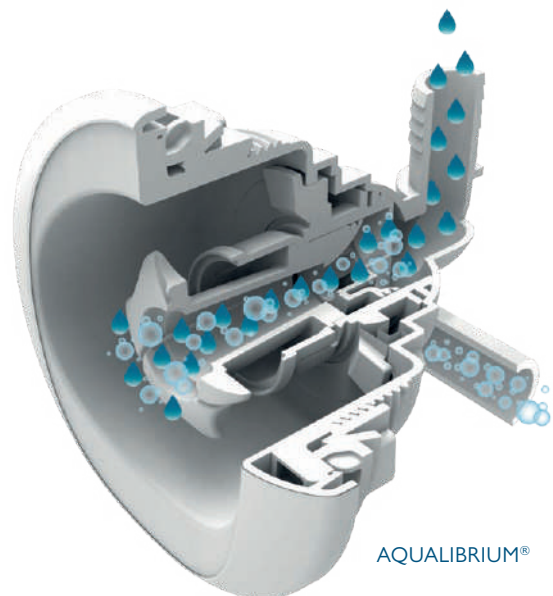
Seats designed to follow the contours of the body and recessed jets placed to perfectly match the muscle structure of the human form deliver a comfortable, premium hydromassage experience for most body types.



ERGONOMIC DESIGN

complete balance

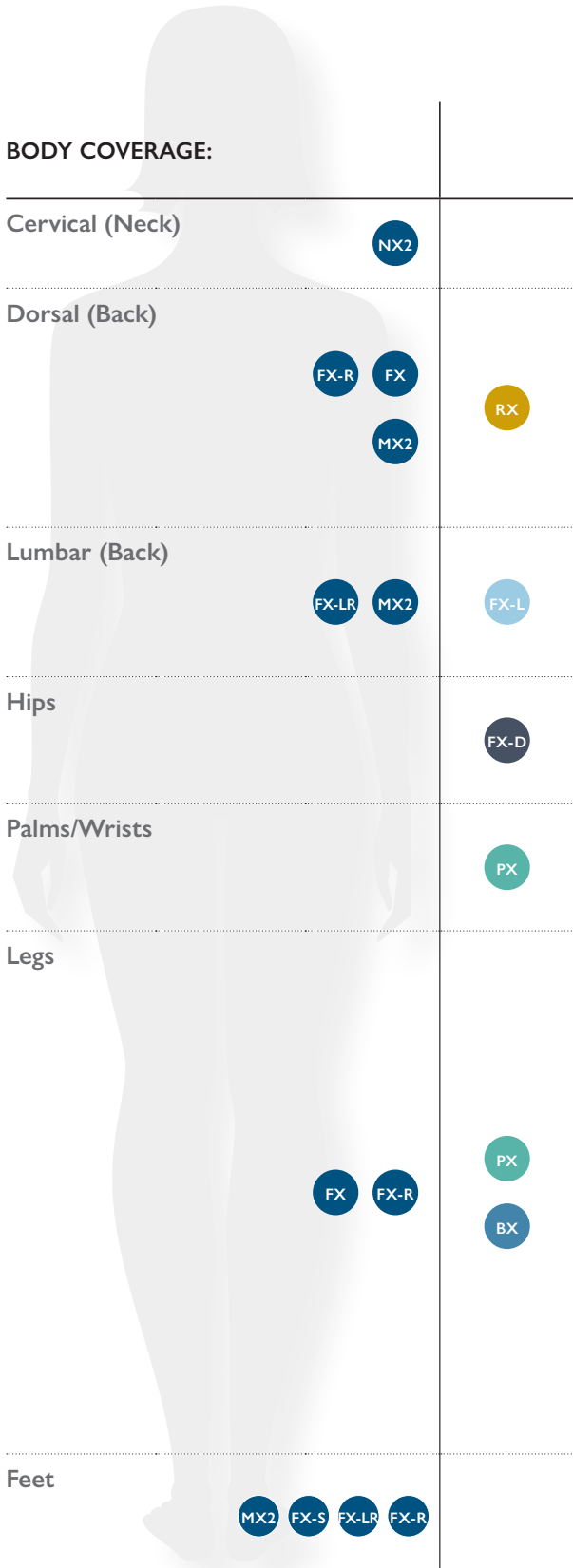
Using the Aqualibrium® Formula, each jet is individually calibrated to deliver the perfect balance of air and water, then precisely paired with the exact pump-to-jet ratio needed to ensure a balanced experience in each and every seat.



HYDROMASSAGE



JACUZZI® POWERPRO® JETS COLLECTION KEY



FX-S Jacuzzi® PowerPro® FX Small

Based on FX technology, the FX Smallets are perfect for a focused massage on key pressure points such as your feet.



FX Jacuzzi® PowerPro® FX

The unique rifling action creates a rejuvenating, spiral stream of air and water, perfect for stimulating muscle groups.



FX-R Jacuzzi® PowerPro® FX Rotational

Focusing on smaller muscle groups with a kneading effect, the FX Rotational Jet stimulates surrounding tissue.



NX2 Jacuzzi® PowerPro® NX2

This directional jet effectively relieves tension and strain in the sensitive and hard-to reach neck area through a highly focused stream of water.

Jacuzzi® PowerPro® Jets

More jets do not necessarily equal a better hydromassage, but the right jets do. From the perfect mix of air and water to the careful placement of each exclusive Jacuzzi® PowerPro® jet, we deliver the optimal massage. And that is why the Jacuzzi® brand is recognised by consumers as the industry leader.



FX-LR Jacuzzi® PowerPro®
FX Large Rotational

With a wide swath that provides an exceptional massage for large muscles, the rotational action can help overworked, overstressed muscles and joints.



MX2 Jacuzzi® PowerPro®
MX2

Based on the form and function of the original Jacuzzi® Jet, the new generation jets deliver maximum volume at a higher air-to-water ratio to deliver a bold massage to the muscles in the lower back.



RX Jacuzzi® PowerPro®
RX

The spinning RX Jet delivers comforting relief to the back and shoulders utilizing the highest performance hydromassage the Jacuzzi® Brand offers.



FX-D Jacuzzi® PowerPro®
FX Directional

Designed to relieve tension and improve circulation, this spiral action directional jet delivers a bold, targeted massage to the hips.



BX Jacuzzi® PowerPro®
BX

Exclusive to the J-300™ collection, the comforting yet rejuvenating bubbling effect massages the calves.



FX-L Jacuzzi® PowerPro®
FX Large

Focusing on the middle of the back to relieve tension and muscle strain, the spiral action massage promotes better circulation.



PX Jacuzzi® PowerPro®
PX

Perfect for small muscle groups in the wrists, hands and legs, the gentle pulsating massage can be adjusted for different rates of flow.

Jacuzzi® PowerPro® jets are available in select models in the J-500™, J-400™, J-300™, Design and Professional collections and in the hydromassage seats of the Swim Spas. Sizes shown are approximate.



The Jacuzzi® Hot Tub water treatment solution uses UV-C technology, that gives you the choice to add the right dose of chlorine or bromine to meet your needs. Regardless of whether you choose, the system will combine ozone with UV-C technology to offer the most powerful clean water system available.

UV-C SYSTEM

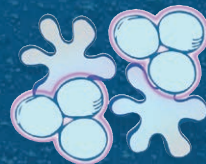
Nature-inspired technology neutralizes pathogens;

- Works with traditional chlorine or bromine sanitizer
- Same technology used in bottled drinking water, aquariums, and healthcare

OUR HANDS-FREE APPROACH TO WATER CARE

Ozone
+ UV-C

Active Oxygen



CLEAN WATER

Clearray Active Oxygen™ is a new water treatment technology that combines the action of ozone with UV-C rays to increase the disinfection of your Hot Tub water and reduce the use of chemicals.

A small amount of ozone is introduced into the Hot Tub water. The ozonated water is treated by the UV-C rays, which triggers a natural reaction. The water with active oxygen destroys most of the pathogens in the water in a very natural way. The clean, clear water is then pumped back into the Hot Tub where it continues to clean and polish the water, breaking down the contaminants so it can be easily be removed through the filters.

5-Stage filtration process*

Stages 1&2 The surface skimming weir and ProCatch™ bag work together to clean the surface while trapping large debris for easy removal.

Stages 3 The ProClarity® filter on the ProStream™ circulation pump helps ensure clean, sparkling water quickly by catching tiny debris and particles that other filters miss.

Stages 4 The ProStream™ circulation pumps pulls the water through a ProClear® filter that works to clarify water even when the jets are not running.

Stages 5 The ProClear® filter operates with your Hot Tub's hydromassage pump to remove large and small particles providing the cleanest water.

All Jacuzzi® Hot Tub collection models use special water treatments and multi-stage filtration to ensure your Hot Tub water is disinfected.

* Stages of filtration vary by collection



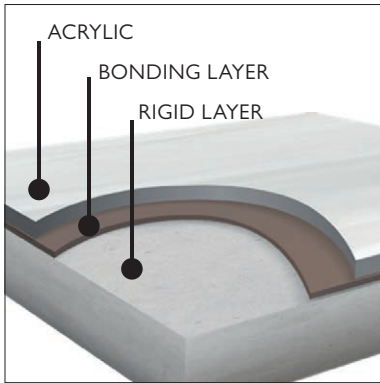


Jacuzzi® Hot Tubs are designed for reliability, both inside and out. We believe that quality is only as good as the people, processes and parts behind the products. That's why our products are exceptionally engineered with the best materials to ensure a superior product.



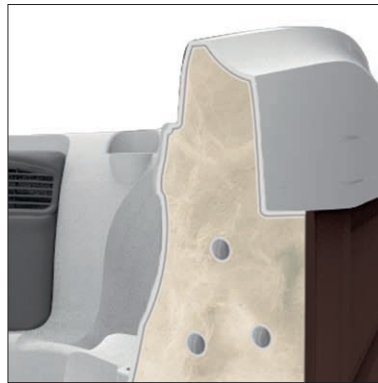
QUALITY

QUALITY



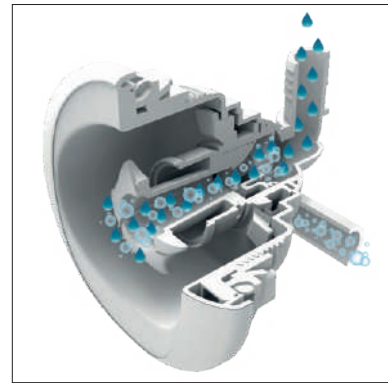
ProFusion™ Shell

Three layers for a strong, scratch-resistant shell



Full-foam Insulation*

An moisture, and sound barrier adding structural integrity to pipes



Jacuzzi® PowerPro® Jets

Utilizes the Venturi (fluid pressure) effect to create the perfect balance of air and water

Superior ProLast™ Covers

Custom fit to lock in heat and improve energy efficiency and safety

Jacuzzi® PowerPro® Jets

Hydromassage with balanced pressure for optimum sensations and efficiency

ProFusion™ Shell

Three layers for a strong, scratch-resistant shell

Programmable Filtration

Adjust settings based on energy usage reports in your SmartTub™ app

Performance-engineered Plumbing

Precise pump-to-jet ratio for optimized water pressure in every seat

Tool-free Cabinetry

High quality, UV-resistant synthetic cabinetry with easy access to critical components in your Hot Tub

Supportive Full-foam Insulation

Retains heat, absorbs noise, and supports plumbing

Durable ProPolymer™ Base

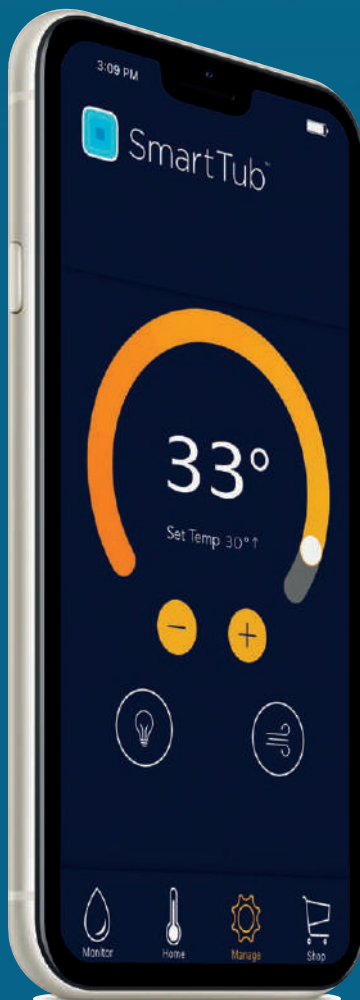
Impervious to nature and moisture, and makes installation easy





Innovation

The exclusive SmartTub™ system is engineered to maximize your relaxation, recovery, and energysaving potential. It's easier than ever to use and maintain your Jacuzzi® Hot Tub.



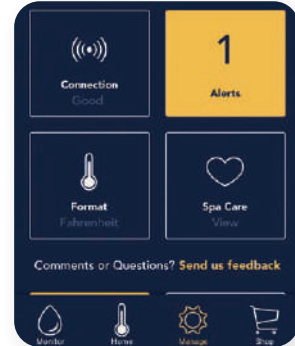
**“ALEXA, ASK
MY HOT TUB
TO START MY
MASSAGE”**

INNOVATION

Simplified Hot Tub ownership at your fingertips

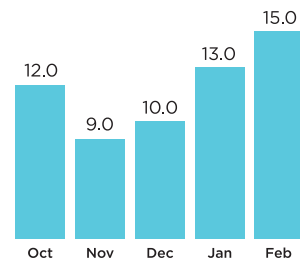
Customize your settings

- Manage your vacation home Hot Tub
- Change temperature and lighting
- Control energy savings and filtration



Remote monitoring

- Delivers energy usage estimates



Easy to use

- Always connected with cellular based service
- Activate Hot Tub with your Smart Home device
- Access personalized tips and how-to videos



SmartTub™



SmartTub™ system uses cellular-based communication and requires cell service from our provider partner in your area.

See website for details. Requires subscription beginning in second year of ownership.

Estimates are based on sensor readings and are not meant to match your utility measurements, see your local utility company for specifics to your local system.

COLLECTION

COLLECTION

J-500™



COLLECTION

J-400™



COLLECTION

J-300™



COLLECTION

J-200™



COLLECTION

DESIGN



COLLECTION

PROFESSIONAL



COLLECTION

LODGE+



COLLECTION

SWIM SPA

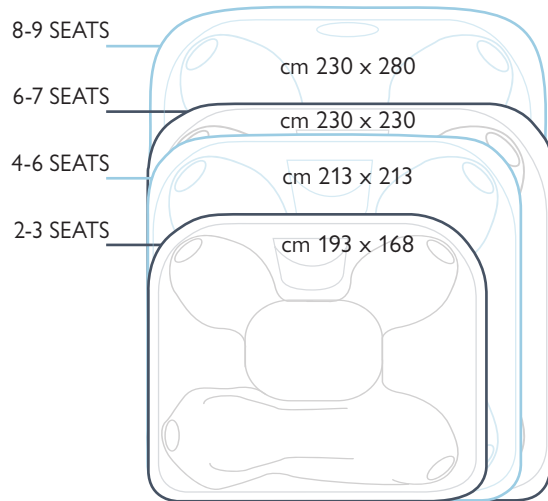


choose your Hot Tub:

1. select the size and number of seats

A common misconception about Hot Tub size is that you're limited to models with less seating options when yard space is limited.

The good news is that a Hot Tub with more massage combinations requires only a slightly larger footprint; sometimes a matter of only a few inches.



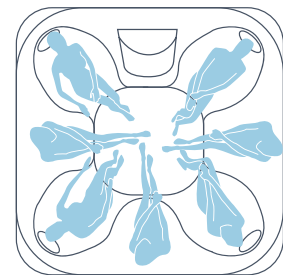
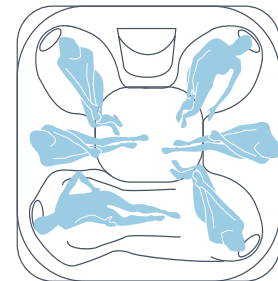
2. select the configuration of the seats

Lounge

As well as offering several seats, the Hot Tub with lounge allows for a complete individual massage while lying back.

Open seating

The Hot Tub with side-by-side seating offers various types of massage.



3. find the Hot Tub for you www.Jacuzzi.com





J-500™ COLLECTION





Features:

- SmartTub™
- Jacuzzi® PowerPro® Jets
- Jacuzzi® PowerPro® Jets, Specialty Jacuzzi® PowerPro® FX-D Jet
- Dual multi-color Waterfalls
- ProTouch™ Glass Control
- ProEdge™ Interior Illumination
- Integrated Corner Exterior Lighting
- Cleararray Active Oxygen™
Low output ozone generator + UV-C
- 5-Stage Filtration System
- ProStream™ Filter Pump
- Propolymer™ Foundation
- Quick Drain® System
- Soft Headrest
- BLUEWAVE® Stereo
 - Premium Speakers,
 - Amplified Sub-Woofer
- Curvalux™ Designer Woven Exterior
- ProLast™ Cover

J - 500™ COLLECTION

Reflexology foot dome

- The J-575™ offers a lateral foot massage that is the perfect way to relax after a long day at the office, an intense workout or long hours on your feet.



Watercolour™ waterfalls

- Dual facing waterfalls, combined with ProEdge™ Interior Lighting provide a 360° fibreoptic experience which creates a complete environment of relaxation that can be tailored to your mood.
- The waterfalls create a relaxing head and neck massage to help unwind after a long day and work in harmony to provide an exceptional massage for the larger back muscles.



RX therapy full body lounger

- The J-575™ lounger is a fully immersive experience with focused and deep tissue massage jets for your back and hips to softer less vigorous jet options for the back of your legs and feet.
- The lounger has been upgraded and debuts two large FX Directional jets that create a kneading effect, which stimulates the muscle tissue in the hips for a superior massage experience.
- The J-575™ hydrotherapy seat incorporates comfortable arms rests which also include advanced PX therapy jets for a pulsating wrist massage.



All Hot Tub dimensions are shown in: L x W x H



JACUZZI® POWERPRO® JETS COLLECTION KEY

At rated voltage, the value may change based on fluctuations in the supply and the tolerance of the components.



J-575™ LOUNGE

5-6 Seats

DIMENSIONS

231 cm x 231 cm x 95/107 H cm

HOT TUB WEIGHT

at dry 407 kg • total filled weight 2.470 kg
floor load 636 kg/m²

AVERAGE VOLUME OF WATER USED

1.685 l

MAXIMUM CURRENT ABSORBED

with electric heater 6,9 kW

TOTAL JETS BY TYPE: 49



SHELL COLOR



Platinum

CURVALUX™ PANEL



Silverwood

PROLAST™ COVER



Black



x5-6



J - 575™



SmartTub™

Never just a Hot Tub, this is an iconic centrepiece with style and excellence woven in.



95/107 cm

231 cm



231 cm



CLEARRAY ACTIVE OXYGEN™



REVERSIBLE CONTROLS



DOUBLE WATERFALL



MULTICOLOR



STEREO SYSTEM

total jets: 49

Hot Tub weight: at dry 407 kg • total filled weight 2.470 kg

floor load 636 kg/m²

maximum current absorbed: with electric heater 6,9 kW





J-400™ COLLECTION



J-485™



Features:

- SmartTub™
- Distinct High Back Design
- Jacuzzi® PowerPro® Jets
- Specialty Jacuzzi® PowerPro® RX and PX Jets
- Watercolour™ Waterfall
- ProTouch™ Control
- Premium Led Lighting
- Exterior Lights
- Illuminated Deviators and Cup Holders
- Cleararray Active Oxygen™
Low output ozone generator + UV-C
- 5-Stage Filtration System
- ProStream™ Filter Pump
- Propolymer™ Foundation
- Quick Drain® System
- Tool-Free Cabinet Removal
- Adjustable Headrest
- Status Indicator Light
- ProFinish™ Cabinetry
- ProLast™ covers

Optional features:

- BLUEWAVE® Stereo
 - Premium Speakers
 - Amplified Sub-Woofer

J - 400™ COLLECTION

In J-495™, J-485™ and J-475™ foot dome

- Positioned centrally in the footwell so that multiple users can benefit from this hydrotherapy massage feature no matter where you are sitting in the Hot Tub.
- This massage capability is ideal to help you unwind after a long day at work, a heavy workout or prolonged time on your feet.



J-495™, J-445™ and J-435™ EXTRA LARGE Watercolour™ waterfall

- Extra large double waterfalls which act as a soothing water feature and as a relaxing head and neck massage to help unwind after a long day.
- This combined with large rotational jets for a focused back massage designed to release and soothe aches and pains.
- The chromotherapy lighting controlled via the ProTouch™ control panel allows you to set the scene and create an ambiance tailored to your needs or occasion.



J-475™ and J-435™ full body massage lounger

- The J-400™ lounger is a fully immersive experience with focused and deep tissue massage jets for your back and hips to delicate and sensual blowers for the back of your legs and feet.
- Create that feeling of lying in bed in total relaxation in this custom hydromassage setting.





J-400™
COLLECTION

All Hot Tub dimensions are shown in: L x W x H



JACUZZI® POWERPRO® JETS COLLECTION KEY



At rated voltage, the value may change based on fluctuations in the supply and the tolerance of the components.



J-495™ LOUNGE

8-9 Seats

DIMENSIONS

231 cm x 279 cm x 95/110 H cm

HOT TUB WEIGHT

at dry 495 kg • total filled weight 3.030 kg
floor load 535 kg/m²

AVERAGE VOLUME OF WATER USED

1.893 l

MAXIMUM CURRENT ABSORBED

with electric heater 8,5 kW

TOTAL JETS: 71



J-485™

6-7 Seats

DIMENSIONS

231 cm x 231 cm x 95/110 H cm

HOT TUB WEIGHT

at dry 415 kg • total filled weight 2.421 kg
floor load 510 kg/m²

AVERAGE VOLUME OF WATER USED

1.647 l

MAXIMUM CURRENT ABSORBED

with electric heater 6,9 kW

TOTAL JETS: 49



J-475™ LOUNGE

6-7 Seats

DIMENSIONS

231 cm x 231 cm x 95/110 H cm

HOT TUB WEIGHT

at dry 420 kg • total filled weight 2.444 kg
floor load 514 kg/m²

AVERAGE VOLUME OF WATER USED

1.666 l

MAXIMUM CURRENT ABSORBED

with electric heater 6,9 kW

TOTAL JETS: 55



J-445™

6 Seats

DIMENSIONS

213 cm x 213 cm x 95/110H cm

HOT TUB WEIGHT

at dry 388 kg • total filled weight 2.052 kg
floor load 513 kg/m²

AVERAGE VOLUME OF WATER USED

1.438 l

MAXIMUM CURRENT ABSORBED

with electric heater 6,9 kW

TOTAL JETS: 45



J-435™ LOUNGE

5-6 Seats

DIMENSIONS

213 cm x 213 cm x 95/110 H cm

HOT TUB WEIGHT

at dry 373 kg • total filled weight 2.037 kg
floor load 510 kg/m²

AVERAGE VOLUME OF WATER USED

1.363 l

MAXIMUM CURRENT ABSORBED

with electric heater 6,9 kW

TOTAL JETS: 47



J-425™

4-5 Seats

DIMENSIONS

193 cm x 221 cm x 86/101 H cm

HOT TUB WEIGHT

at dry 352 kg • total filled weight 1.941 kg
floor load 514 kg/m²

AVERAGE VOLUME OF WATER USED

1.211 l

MAXIMUM CURRENT ABSORBED

with electric heater 6,9 kW

TOTAL JETS: 35



SHELL COLORS



PROFINISH™ PANEL



PROLAST™ COVER





SmartTub™

The largest Hot Tub in the Jacuzzi® range with 9 hydromassage seats. Ideal for use when socialising or having fun with family or friends, it features a special invigorating massage function. For a very relaxing experience with all the benefits of music and colour therapy functions.



95/110 cm

231 cm



CLEARRAY
ACTIVE OXYGEN™



REVERSIBLE
CONTROLS



WATERFALL



MULTICOLOR



STEREO
SYSTEM



279 cm

total jets: 71

Hot Tub weight: at dry 495 kg • total filled weight 3.030 kg

floor load 535 kg/m²

maximum current absorbed: with electric heater 8,5 kW





x6-7

J - 4 8 5™



SmartTub™

The J-485™ offers a complete hydro-massage as well as a brand-new design. With open seats of different heights, the J-485™ Hot Tub offers support from neck to toe with a specifically designed dome providing a foot massage.



95/110 cm



CLEARRAY
ACTIVE OXYGEN™



REVERSIBLE
CONTROLS



WATERFALL



MULTICOLOR



STEREO
SYSTEM



231 cm

231 cm

total jets: 49

Hot Tub weight: at dry 415 kg • total filled weight 2.421 kg

floor load 510 kg/m²

maximum current absorbed: with electric heater 6,9 kW





SmartTub™

The J-475™ is the Hot Tub designed to offer the most intense hydro-massage experiences. Thanks to the Jacuzzi® collection's wide variety of Jacuzzi® PowerPro® jets and a lounge seat that allows for full body immersion, the J-475™ ensures a particularly relaxing experience thanks also to unique details such as the illuminated waterfall.



95/110 cm



CLEARRAY
ACTIVE OXYGEN™



REVERSIBLE
CONTROLS



WATERFALL



MULTICOLOR



STEREO
SYSTEM



231 cm

231 cm

total jets: 55

Hot Tub weight: at dry 420 kg • total filled weight 2.444 kg

floor load 514 kg/m²

maximum current absorbed: with electric heater 6,9 kW





SmartTub

The youngest of the J-400™ collection stands out for its new design and attention to detail. J-445™ benefits from a new heat management system for optimal efficiency and energy savings.



95/10 cm



CLEARARRAY
ACTIVE OXYGEN™



REVERSIBLE
CONTROLS



WATERFALL



MULTICOLOR



STEREO
SYSTEM

213 cm



213 cm

total jets: 45

Hot Tub weight: at dry 388 kg • total filled weight 2.052 kg

floor load 513 kg/m²

maximum current absorbed: with electric heater 6,9 kW





J - 435™



SmartTub™

The new J-400™ Hot Tub with lounge oozes perfection in every detail: it boasts a backlit waterfall and integrated cup holders, adjustable pillows and a multi-directional control panel, corner courtesy lights and easy inspection.



95/10 cm



CLEARRAY
ACTIVE OXYGEN™



REVERSIBLE
CONTROLS



WATERFALL



MULTICOLOR



STEREO
SYSTEM

213 cm



213 cm

total jets: 47

Hot Tub weight: at dry 373 kg • total filled weight 2.037 kg

floor load 510 kg/m²

maximum current absorbed: with electric heater 6,9 kW





SmartTub

The Hot Tub most compact than the J-400™ collection, designed to go through double doors or into your garden building, an ideal solution for indoor or outdoor installations.



86/101 cm

193 cm



221 cm



CLEARARRAY ACTIVE OXYGEN™



REVERSIBLE CONTROLS



WATERFALL



MULTICOLOR



STEREO SYSTEM

total jets: 35

Hot Tub weight: at dry 352 kg • total filled weight 1.941 kg

floor load 514 kg/m²

maximum current absorbed: with electric heater 6,9 kW





J-300™ COLLECTION





J-335™

Features:

- Jacuzzi® PowerPro® Jets
- Specialty Jacuzzi® PowerPro® BX and FX-L Jets
- HydroSoothe™ Massage Pillow
- Illuminated Control
- 4-Stage Filtration System
- ProStream™ Circulation Pump
- Propolymer™ Foundation
- Tool-Free Cabinet
- Water Rainbow® Waterfall
- ProLite™ Led Lighting
- Exterior Lights
- ProFinish™ Cabinetry
- Illuminated Cup Holders
- Cleararray Active Oxygen™
Low output ozone generator + UV-C
- ProLast™ covers

Optional Features:

- SmartTub™ Compatible
- BLUEWAVE® Stereo
 - Standard Speakers
 - Sub-Woofer

J - 300™ COLLECTION

In J-385™, J-365™ and J-345™ foot dome with exclusive IX Jet lighting

- The J-300™ reflexology experience comes in a variety of forms from full to multiple half foot dome modules that provide an advanced foot massage.
- Positioned centrally in the footwell so that multiple users can benefit from this hydrotherapy massage feature no matter where you are sitting in the Hot Tub.
- This massage capability is ideal to help you unwind after a long day at work, a heavy workout or prolonged time on your feet.



Hydrosoothe™ Massage Pillow

- A waterfall which acts as a soothing water feature and as a relaxing head and neck massage to help unwind after a long day.
- Two large rotational jets integrated into the Hydrosoothe™ Massage Pillow for a focused back massage designed to release and soothe aches and pains
- The ProLite™ chromotherapy lighting allows you to set the scene and create an ambiance tailored to your needs or occasion.



J-375™, J-355™, J-335™ and J-315™ full body massage lounger

- The J-300™ lounger combines all the technology of the Jacuzzi® PowerPro® jet offering giving you a full body massage from head to toe.
- A fully immersive experience with focused and deep tissue massage jets for your back and hips to softer less vigorous jet options for the back of your legs and feet.
- The lounger combined with speciality Jacuzzi® PowerPro® BX and FX-L Jets exclusive to the collection offer a more advanced lower back and leg massage perfect for recovery after a long day.





J-385™

J-300™
COLLECTION

All Hot Tub dimensions are shown in: L x W x H



JACUZZI® POWERPRO® JETS COLLECTION KEY

At rated voltage, the value may change based on fluctuations in the supply and the tolerance of the components.



J-385™

6-7 Seats

DIMENSIONS

231 cm x 231 cm x 95 H cm

HOT TUB WEIGHT

at dry 386 kg • total filled weight 2.618 kg
floor load 541 kg/m²

AVERAGE VOLUME OF WATER USED

1.741 l

MAXIMUM CURRENT ABSORBED

with electric heater 6,7 kW

TOTAL JETS BY TYPE: 51



J-375™ LOUNGE

5-6 Seats

DIMENSIONS

231 cm x 231 cm x 95 H cm

HOT TUB WEIGHT

at dry 376 kg • total filled weight 2.571 kg
floor load 531 kg/m²

AVERAGE VOLUME OF WATER USED

1.685 l

MAXIMUM CURRENT ABSORBED

with electric heater 6,7 kW

TOTAL JETS BY TYPE: 52



J-365™

6-7 Seats

DIMENSIONS

231 cm x 214 cm x 95 H cm

HOT TUB WEIGHT

at dry 365 kg • total filled weight 2.257 kg
floor load 568 kg/m²

AVERAGE VOLUME OF WATER USED

1.495 l

MAXIMUM CURRENT ABSORBED

with electric heater 6,7 kW

TOTAL JETS BY TYPE: 46



J-355™ LOUNGE

5-6 Seats

DIMENSIONS

231 cm x 214 cm x 95 H cm

HOT TUB WEIGHT

at dry 369 kg • total filled weight 1.855 kg
floor load 560 kg/m²

AVERAGE VOLUME OF WATER USED

1.363 l

MAXIMUM CURRENT ABSORBED

with electric heater 6,7 kW

TOTAL JETS BY TYPE: 44



J-345™

6-7 Seats

DIMENSIONS

214 cm x 214 cm x 91 H cm

HOT TUB WEIGHT

at dry 352 kg • total filled weight 2.036 kg
floor load 553 kg/m²

AVERAGE VOLUME OF WATER USED

1.306 l

MAXIMUM CURRENT ABSORBED

with electric heater 6,7 kW

TOTAL JETS BY TYPE: 41



J-335™ LOUNGE

5-6 Seats

DIMENSIONS

214 cm x 214 cm x 91 H cm

HOT TUB WEIGHT

at dry 347 kg • total filled weight 2.125 kg
floor load 557 kg/m²

AVERAGE VOLUME OF WATER USED

1.325 l

MAXIMUM CURRENT ABSORBED

with electric heater 6,7 kW

TOTAL JETS BY TYPE: 42



J-325™

4-5 Seats

DIMENSIONS

193 cm x 213 cm x 85 H cm

HOT TUB WEIGHT

at dry 281 kg • total filled weight 1.983 kg
floor load 620 kg/m²

AVERAGE VOLUME OF WATER USED

1.268 l

MAXIMUM CURRENT ABSORBED

with electric heater 5,1 kW

TOTAL JETS BY TYPE: 23



J-315™ LOUNGE

2-3 Seats

DIMENSIONS

193 cm x 168 cm x 81 H cm

HOT TUB WEIGHT

at dry 241 kg • total filled weight 1.300 kg
floor load 544 kg/m²

AVERAGE VOLUME OF WATER USED

795 l

MAXIMUM CURRENT ABSORBED

with electric heater 5,1 kW

TOTAL JETS BY TYPE: 23



SHELL COLORS



PROFINISH™ PANEL



PROLAST™ COVER





The largest all seater hydrotherapy Hot tub in the J-300™ collection. Great for socialising with all your friends and family.



95 cm

231 cm



231 cm



CLEARRAY
ACTIVE OXYGEN™



HYDROSOOTHE™
PILLOW



WATERFALL



MULTICOLOR



STEREO
SYSTEM

total jets: 51

Hot Tub weight: at dry 386 kg • total filled weight 2.618 kg

floor load 541 kg/m²

maximum current absorbed: with electric heater 6,7 kW





x5-6



J - 3 7 5™



Our largest Hot Tub in the J-300™ collection complete with a lounger offering you a varied and fully immersive bathing experience ideal for a large family or for socialising with groups of friends.



95 cm

231 cm



231 cm



CLEARRAY
ACTIVE OXYGEN™



HYDROSOOTHE™
PILLOW



WATERFALL



MULTICOLOR



STEREO
SYSTEM

total jets: 52

Hot Tub weight: at dry 376 kg • total filled weight 2571 kg

floor load 531 kg/m²

maximum current absorbed: with electric heater 6,7 kW





A mid-sized spacious all seater social Hot Tub.
The increased height gives more options for taller adults but doesn't forget about the rest of the family with a seat for everyone.



95 cm

231 cm



214 cm



CLEARRAY
ACTIVE OXYGEN™



HYDROSOOTHE™
PILLOW



WATERFALL



MULTICOLOR



STEREO
SYSTEM

total jets: 46

Hot Tub weight: at dry 365 kg • total filled weight 2.257 kg

floor load 568 kg/m²

maximum current absorbed: with electric heater 6,7 kW





x5-6



J - 3 5 5™



A mid-sized Hot Tub and the only product in our range to offer you two low height child seats great for young families.



95 cm

231 cm



214 cm



CLEARRAY
ACTIVE OXYGEN™



HYDROSOOTHE™
PILLOW



WATERFALL



MULTICOLOR



STEREO
SYSTEM

total jets: 44

Hot Tub weight: at dry 369 kg • total filled weight 1.855 kg

floor load 560 kg/m²

maximum current absorbed: with electric heater 6,7 kW





An all seater social Hot Tub ideal for families and socialising including four hydrotherapy corner seats and a reflexology dome for your feet.



91 cm

214 cm



214 cm



CLEARARRAY
ACTIVE OXYGEN™



HYDROSOOTHE™
PILLOW



WATERFALL



MULTICOLOR



STEREO
SYSTEM

total jets: 41

Hot Tub weight: at dry 352 kg • total filled weight 2.036 kg

floor load 553 kg/m²

maximum current absorbed: with electric heater 6,7 kW





x5-6



J - 3 3 5™



Ideal for families and comes with a variety of deep and shallow seats with an open plan foot well making this Hot Tub especially suitable for younger children.



91 cm

214 cm



214 cm



CLEARRAY
ACTIVE OXYGEN™



HYDROSOOTHE™
PILLOW



WATERFALL



MULTICOLOR



STEREO
SYSTEM

total jets: 42

Hot Tub weight: at dry 347 kg • total filled weight 2.125 kg

floor load 557 kg/m²

maximum current absorbed: with electric heater 6,7 kW





A compact Hot Tub that will fit through most household double doors into a conservatory or garden building.



85 cm



CLEARRAY
ACTIVE OXYGEN™



HYDROSOOTHE™
PILLOW



WATERFALL



MULTICOLOR



STEREO
SYSTEM

193 cm



213 cm

total jets: 23

Hot Tub weight: at dry 281 kg • total filled weight 1.983 kg

floor load 620 kg/m²

maximum current absorbed: with electric heater 5,1 kW





x2-3



J - 3 1 5™



A compact 2 to 3 seater Hot Tub ideal for small spaces, patios, terraces and balconies. This Hot Tub is great for couples and offers all the luxuries and technology of the larger products in this collection.



81 cm



CLEARRAY
ACTIVE OXYGEN™



HYDROSOOTHE™
PILLOW



WATERFALL



MULTICOLOR



STEREO
SYSTEM

193 cm



168 cm

total jets: 23

Hot Tub weight: at dry 241 kg • total filled weight 1.300 kg

floor load 544 kg/m²

maximum current absorbed: with electric heater 5,1 kW





J-200™ COLLECTION





J - 200™
COLLECTION

Features:

- Classic & ClassicPro™ Jets
- Cleararray Active Oxygen™
- 2-Stage Filtration System
- Comfortable Headrests
- Built-In Drink Holders
- Illuminated Waterfall
- Multi-Colored Lighting
- Covers ProLast™

J - 200™ COLLECTION

Performance

- A complete Hot Tub experience, with tested positioning of jets
- Differentiated ergonomic seats with diversified configurations and jets to offer every user the ideal massage



Design

- The utmost durability and efficiency, with a sturdy acrylic shell and complete insulation
- Features UV-resistant cabinet that stays beautiful longer



Ease of use

- Easy to use, with single control buttons
- Facilitates maintenance with top-loading filtration system



J-200™
COLLECTION



J-245™

All Hot Tub dimensions are shown in: L x W x H

At rated voltage, the value may change based on fluctuations in the supply and the tolerance of the components.



J-280™

6-7 Seats

DIMENSIONS

229 cm x 229 cm x 93 H cm

HOT TUB WEIGHT

at dry 401 kg • total filled weight 2.558 kg
floor load 529 kg/m²

AVERAGE VOLUME OF WATER USED 1.741 l

MAXIMUM CURRENT ABSORBED.

with electric heater 6,5 kW

TOTAL JETS

44 ClassicPro™



J-275™



6 Seats

DIMENSIONS

229 cm x 229 cm x 93 H cm

HOT TUB WEIGHT

at dry 366 kg • total filled weight 2.371 kg
floor load 490 kg/m²

AVERAGE VOLUME OF WATER USED 1.590 l

MAXIMUM CURRENT ABSORBED

with electric heater 6,5 kW

TOTAL JETS

45 ClassicPro™



J-245™

6-7 Seats

DIMENSIONS

213 cm x 213 cm x 91 H cm

HOT TUB WEIGHT

at dry 375 kg • total filled weight 2.153 kg
floor load 539 kg/m²

AVERAGE VOLUME OF WATER USED 1.363 l

MAXIMUM CURRENT ABSORBED

with electric heater 6,5 kW

TOTAL JETS

35 ClassicPro™



J-235™



6 Seats

DIMENSIONS

213 cm x 213 cm x 91 H cm

HOT TUB WEIGHT

at dry 326 kg • total filled weight 2.066 kg
floor load 516 kg/m²

AVERAGE VOLUME OF WATER USED 1.363 l

MAXIMUM CURRENT ABSORBED

with electric heater 6,5 kW

TOTAL JETS

35 ClassicPro™



J-225™

4-5 Seats

DIMENSIONS

193 cm x 213 cm x 87 H cm

HOT TUB WEIGHT

at dry 255 kg • total filled weight 1.914 kg
floor load 497 kg/m²

AVERAGE VOLUME OF WATER USED 1.340 l

MAXIMUM CURRENT ABSORBED

with electric heater 4,9 kW

TOTAL JETS

23 Classic



J-215™



2-3 Seats

DIMENSIONS

193 cm x 168 cm x 81 H cm

HOT TUB WEIGHT

at dry 223 kg • total filled weight 1.261 kg
floor load 420 kg/m²

AVERAGE VOLUME OF WATER USED 833 l

MAXIMUM CURRENT ABSORBED

with electric heater 4,9 kW

TOTAL JETS

19 Classic



J-210™

4 Seats

DIMENSIONS

Ø 198 cm x 91 H cm

HOT TUB WEIGHT

at dry 239 kg • total filled weight 1.412 kg
floor load 527 kg/m²

AVERAGE VOLUME OF WATER USED 908 l

MAXIMUM CURRENT ABSORBED

with electric heater 4,9 kW

TOTAL JETS

19 Classic

SHELL COLOR



Platinum

PANELS COLORS



Silverwood



Roasted chestnut

PROLAST™ COVER



Black



Complete relaxation is assured in the largest and deepest Hot Tub in the range.



98 cm

229 cm



229 cm



CLEARRAY ACTIVE OXYGEN™



2 FILTERING LEVELS



WATERFALL



RGB LED LIGHTING

total jets: 44

Hot Tub weight: at dry 401 kg • total filled weight 2.558 kg

floor load 529 kg/m²

maximum current absorbed: with electric heater 6,5 kW





From fun times to serene retreats, the lounge and seat configuration are always inviting.



93 cm

229 cm



229 cm



CLEARARRAY
ACTIVE OXYGEN™



2 FILTERING
LEVELS



WATERFALL



RGB LED
LIGHTING

total jets: 45

Hot Tub weight: at dry 366 kg • total filled weight 2.371 kg

floor load 490 kg/m²

maximum current absorbed: with electric heater 6,5 kW





Ideal for families of 6-7 people especially with older children or as a great social Hot Tub for adults.



92 cm

214 cm



214 cm



CLEARRAY
ACTIVE OXYGEN™



2 FILTERING
LEVELS



WATERFALL



RGB LED
LIGHTING

total jets: 35

Hot Tub weight: at dry 375 kg • total filled weight 2.153 kg

floor load 539 kg/m²

maximum current absorbed: with electric heater 6,5 kW





J - 235™



A family Hot Tub with a lounger for fun and relaxation.



92 cm

214 cm



214 cm



CLEARRAY
ACTIVE OXYGEN™



2 FILTERING
LEVELS



WATERFALL



RGB LED
LIGHTING

total jets: 35

Hot Tub weight: at dry 326 kg • total filled weight 2.066 kg

floor load 516 kg/m²

maximum current absorbed: with electric heater 6,5 kW





Ideal for patios or small spaces, this value model accommodates up to five adults and offers a pivot bench seat for flexibility and comfort.



87 cm

193 cm



CLEARRAY
ACTIVE OXYGEN™



2 FILTERING
LEVELS



WATERFALL



RGB LED
LIGHTING



213 cm

total jets: 23

Hot Tub weight: at dry 255 kg • total filled weight 1.914 kg

floor load 497 kg/m²

maximum current absorbed: with electric heater 4,9 kW





x2-3



J - 2 1 5™



This value model is perfect for patios or small spaces, featuring a full-body lounge and side-by-side seating that accommodates up to three adults.



81 cm

193 cm



CLEARRAY
ACTIVE OXYGEN™



2 FILTERING
LEVELS



WATERFALL



RGB LED
LIGHTING



168 cm

total jets: 19

Hot Tub weight: at dry 223 kg • total filled weight 1.261 kg

floor load 420 kg/m²

maximum current absorbed: with electric heater 4,9 kW





A compact space saving Hot Tub for 4 people ideal in small spaces, patios, balconies or terraces.



92 cm

Ø 198 cm



CLEARARRAY
ACTIVE OXYGEN™



2 FILTERING
LEVELS



RGB LED
LIGHTING

total jets: 19

Hot Tub weight: at dry 239 kg • total filled weight 1.412 kg

floor load 527 kg/m²

maximum current absorbed: with electric heater 4,9 kW



J-200™
COLLECTION





DESIGN COLLECTION





Features:

- Jacuzzi® PowerPro® Jets
- Blower (Profile, Santorini, Delos, Delfi, Unique, Alimia)
- Waterfall (Santorini, Delos, Delfi)
- Automatic water fill-up (Virtus, Profile)
- Back-lit touch controls
- Light System - Multicolour
- Cleararray® UV-C
- 2-stage filtration system
- Base in Propolymer™
- Insulation EcoShield (Virtus, Skylounge®)
- ProVinyl Cover
- Built-in or freestanding installation

Optional features:

- Performance kit (Sand filter)
- Heat Exchanger
- Winter Pro Kit

DESIGN COLLECTION

Design made in Italy

- Elegant, minimalist and sophisticated, these Hot Tubs are designed to suit any environment. Each model is available with external panels in a variety of materials and colours in line with contemporary design trends.
- These Hot Tubs give the greatest possible freedom of installation: outdoors or indoors, above or in-ground, in any environment or situation.



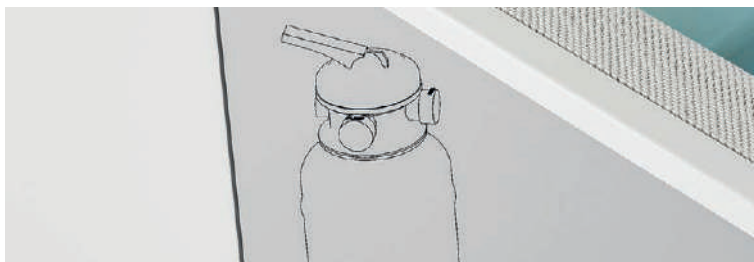
Original Jacuzzi® Hot Tubs with infinity effect

The Virtus and Profile models offer a spectacular infinity pool effect. On immersion, any excess water is collected in the integrated adjustment tanks via the outside grille and then returned to the tub, in order to maintain the ideal level at all times, just like a pool, with no need for top ups.



Cartridge or sand filter

The Profile, Santorini, Delos, Delfi and Unique models are equipped with a cartridge filter but are also compatible with the Performance Kit sand filter that guarantees greater filtering efficiency and reduced maintenance. Virtus is the only free-standing Hot Tub model with integrated sand filter.





VIRTUS
panels Graphite

DESIGN
COLLECTION

All Hot Tub dimensions are shown in: L x W x H



At rated voltage, the value may change based on fluctuations in the supply and the tolerance of the components.

JACUZZI® POWERPRO® JETS COLLECTION KEY



Virtus

6-7 Seats
DIMENSIONS
 250 cm x 215 cm x 93 H cm
HOT TUB WEIGHT
 at dry 410 kg • total filled weight 2.450 kg
 floor load 490 kg/m²
AVERAGE VOLUME OF WATER USED 1.500 l
MAXIMUM CURRENT ABSORBED
 with electric heater 5,4 kW
TOTAL JETS BY TYPE: 50



Profile

5-6 Seats
DIMENSIONS
 235 cm x 211 cm x 93 H cm
 239 cm x 215 cm x 93 H cm
HOT TUB WEIGHT
 at dry 350 kg • total filled weight 2.460 kg
 floor load TOP 558 / BASE 547 kg/m²
AVERAGE VOLUME OF WATER USED 1.600 l
MAXIMUM CURRENT ABSORBED
 with electric heater TOP 5,4 / BASE 4,7 kW
 with heat exchanger 2,0 kW
TOTAL JETS BY TYPE: 45 + 14 BLOWER



Santorini

5 Seats
DIMENSIONS
 215 cm x 230 cm x 90 cm
HOT TUB WEIGHT
 at dry 300 kg • total filled weight 2.100 kg
 floor load 479 kg/m²
AVERAGE VOLUME OF WATER USED 1.250 l
MAXIMUM CURRENT ABSORBED
 with electric heater 4,7 kW
 with heat exchanger 3,7 kW
TOTAL JETS BY TYPE: 43 + 14 BLOWER



Delos

4 Seats
DIMENSIONS
 215 cm x 190 cm x 80 H cm
HOT TUB WEIGHT
 at dry 250 kg • total filled weight 1.390 kg
 floor load 459 kg/m²
AVERAGE VOLUME OF WATER USED 860 l
MAXIMUM CURRENT ABSORBED
 with electric heater 4,7 kW
 with heat exchanger 2,0 kW
TOTAL JETS BY TYPE: 26 + 10 BLOWER



Delfi

4 Seats
DIMENSIONS
 190 cm x 190 cm x 80 H cm
HOT TUB WEIGHT
 at dry 270 kg • total filled weight 1.440 kg
 floor load 460 kg/m²
AVERAGE VOLUME OF WATER USED 700 l
MAXIMUM CURRENT ABSORBED
 with electric heater 4,7 kW
 with heat exchanger 2,0 kW
TOTAL JETS BY TYPE: 26 + 10 BLOWER



Skylounge®

4 Seats
DIMENSIONS
 190 cm x 190 cm x 72/80 H cm
HOT TUB WEIGHT
 at dry 220 kg • total filled weight 985 kg
 floor load 328 kg/m²
AVERAGE VOLUME OF WATER USED 600 l
MAXIMUM CURRENT ABSORBED
 with electric heater 4,7 kW
TOTAL JETS BY TYPE: 10



Unique

3 Seats
DIMENSIONS
 190 cm x 150 cm x 80 H cm
HOT TUB WEIGHT
 at dry 240 kg • total filled weight 1.270 kg
 floor load 552 kg/m²
AVERAGE VOLUME OF WATER USED 630 l
MAXIMUM CURRENT ABSORBED
 with electric heater 3,9 kW
TOTAL JETS BY TYPE: 24 + 10 BLOWER



City™ SPA

2 Seats
DIMENSIONS
 150 cm x 160 cm x 75 H cm
HOT TUB WEIGHT
 at dry 220 kg • total filled weight 790 kg
 floor load 350 kg/m²
AVERAGE VOLUME OF WATER USED 470 l
MAXIMUM CURRENT ABSORBED
 with electric heater (2,0 kW) 3,7 kW
 with electric heater (1,5 kW) 1,8 kW
TOTAL JETS BY TYPE: 20

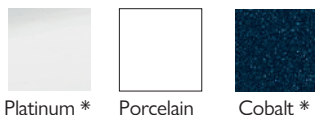


Alimia

5-6 Seats
DIMENSIONS
 Ø 212 cm x 90 H cm
HOT TUB WEIGHT
 at dry 290 kg • total filled weight 1.940 kg
 floor load 626 kg/m²
AVERAGE VOLUME OF WATER USED 1.370 l
MAXIMUM CURRENT ABSORBED
 with electric heater 5,4 kW
TOTAL JETS BY TYPE: 28 + 12 BLOWER



SHELL COLOR



PROVINYL COVER



PANEL MATERIALS

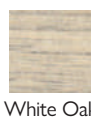
SYNTHETIC WOOD



WOOD



COMPOSITE-PVC



OUTDOOR FABRIC



* Check on price list by model





x6-7



VIRTUS

design Dodo Arslan
Jacuzzi® design



Dedicated not only to the hospitality world, Virtus is the ideal Hot Tub for sharing a moment of well-being, having fun together and freeing the mind. The seven slanted seats and increasing depth make for a targeted and complete hydro-massage to suit everybody. The infinity edge and auto-adjustment system allow the water to be kept at the ideal level, with no need for top ups.

NB. Water and drainage connection required.



CLEARARRAY
ACTIVE OXYGEN™



INFINITY
SPA



SAND FILTER



QUICK DRAIN®



MULTICOLOR



93 cm

250 cm



215 cm

total jets: 50

Hot Tub weight: at dry 410 kg • total filled weight 2.450 kg

floor load 490 kg/m²

maximum current absorbed: with electric heater 5,4 kW



An infinity swimming pool effect with automatic water levelling technology, which refills the Hot Tub when water is lost through use and evaporation, a truly unique and beautiful design.

NB. Water and drainage connection required.



93 cm

239 cm



CLEARRAY®
UV-C SYSTEM



INFINITY
SPA



2 FILTERING
LEVELS



MULTICOLOR



215 cm

total jets: 31 idro + 14 blower

Hot Tub weight: at dry 350 kg • total filled weight 2.460 kg

floor load TOP 558 / BASE 547 kg/m²

maximum current absorbed: with electric heater TOP 5,4 kW

BASE 4,7 kW • with heat exchanger 2,0 kW



The only Hot Tub in the range with a double lounge, wide support ledge and large headrests in soft material for greater comfort.



90 cm

215 cm



230 cm



CLEARRAY®
UV-C SYSTEM



2 FILTERING
LEVELS



WATERFALL



MULTICOLOR

total jets: 29 idro + 14 blower

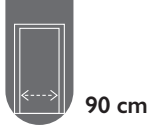
Hot Tub weight: at dry 300 kg • total filled weight 2.100 kg

floor load 479 kg/m²

maximum current absorbed:

with electric heater 4,7 kW • with heat exchanger 3,7 kW





DELOS
design
Kaluderovic & Condini



Contemporary minimalist design with a wider rim for easy access combined with comfortable headrests and a large corner cushion that can be used as a seat. The reduced height facilitates access and installation of the Hot Tub in the home.



80 cm

215 cm



190 cm



CLEARRAY®
UV-C SYSTEM



2 FILTERING
LEVELS



WATERFALL



MULTICOLOR

total jets: 16 idro + 10 blower

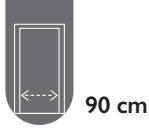
Hot Tub weight: at dry 250 kg • total filled weight 1.390 kg

floor load 459 kg/m²

maximum current absorbed:

with electric heater 4,7 kW • with heat exchanger 2,0 kW





DELFI
design
Kaluderovic & Condini



Ideal for small spaces, patios, terraces and balconies – whilst still delivering a perfect blend of contemporary design and comfort.

A small Hot Tub, versatile in seating and with low height that facilitates access and installation in the home.



80 cm



CLEARRAY®
UV-C SYSTEM



2 FILTERING
LEVELS



WATERFALL



MULTICOLOR



190 cm

190 cm

total jets: 16 idro + 10 blower

Hot Tub weight: at dry 270 kg • total filled weight 1.440 kg

floor load 460 kg/m²

maximum current absorbed:

with electric heater 4,7 kW • with heat exchanger 2,0 kW





x4



90 cm

SKYLOUNGE®

design

Kaluderovic & Condini



Designed especially for smaller spaces, Skylounge® can accommodate up to four people and is characterized by a soft shape with raised edge: complete with comfortable headrests. The raised floor offers two depths, with Jacuzzi® PowerPro® jets that target different parts of the body.



72/80 cm

190 cm



190 cm



CLEARRAY®
UV-C SYSTEM



1 FILTERING
LEVELS



MULTICOLOR



LOW NOISE

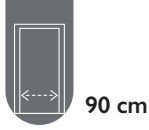
total jets: 10

Hot Tub weight: at dry 220 kg • total filled weight 985 kg

floor load 328 kg/m²

maximum current absorbed: with electric heater 4,7 kW





UNIQUE

design
Carlo Urbinati



Designed for contained spaces, Unique adapts to any environment with its minimalist style, while its reduced height facilitates both access and installation. this Hot Tub offers side-by-side bathing and is ideal for couples – perfect for small patios, terraces or balconies.



80 cm



CLEARRAY®
UV-C SYSTEM



2 FILTERING
LEVELS



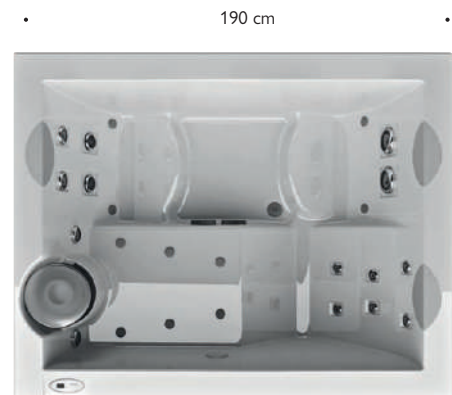
MULTICOLOR

total jets: 14 idro + 10 blower

Hot Tub weight: at dry 240 kg • total filled weight 1.270 kg

floor load 552 kg/m²

maximum current absorbed: with electric heater 3,9 kW



190 cm

150 cm





x2



80 cm

CITY™ SPA

design
Kaluderovic & Condini



For when functionality needs to fit a compact environment and is ideal for couples. Owing to its compact size and reduced floor load, it can be installed anywhere, constituting the ideal solution both at home and in small spas or communal hotel facilities.



75 cm



CLEARRAY®
UV-C SYSTEM



2 FILTERING
LEVELS



WATERFALL



MULTICOLOR

150 cm



160 cm

total jets: 20

Hot Tub weight: at dry 220 kg • total filled weight 790 kg • floor load 350 kg/m²

maximum current absorbed:

with electric heater (2,0 kW) 3,7 kW • with electric heater (1,5 kW) 1,8 kW





x5-6



90 cm

ALIMIA

design
Jacuzzi® Design



A large circular Hot Tub with an encompassed hydrotherapy solution ideal for couples and small families. Five separate hydro-massage seats, air flow adjustment, a broad base, and a practical integrated step to facilitate access to the tub, in addition to integrated handles.



90 cm

Ø 212 cm



CLEARRAY®
UV-C SYSTEM



MULTICOLOR

total jets: 28 idro + 12 blower

Hot Tub weight: at dry 290 kg • total filled weight 1.940 kg

floor load 626 kg/m²

maximum current absorbed: with electric heater 5,4 kW





LODGE+ COLLECTION



LODGE+ M

Features:

- Jets Classic
- Back-lit touch control
- LED control panel
- Underwater LED multicolor light
- Cleararray® UV
- Cartridge or sand filtering system
- Base in Propolymer™
- EcoShield insulation
- Insulating cover ProVinyl
- Above or In-ground Installation

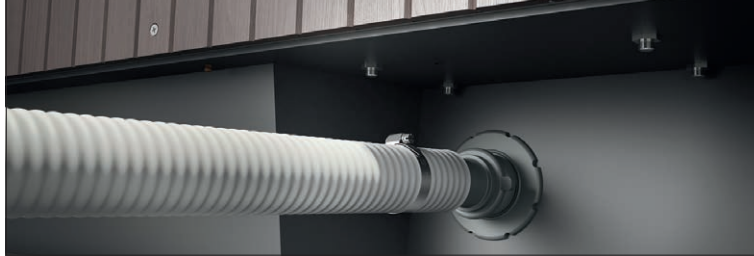
Optional features:

- Sand Filtration
- Heat Exchanger
- Heat Plus
- Marine Kit: to use with seawater
(Titanium heater, AISI 316 L frame)

LODGE+ COLLECTION

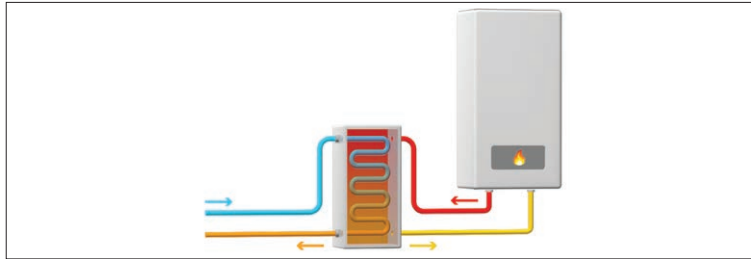
Complete & Quick Drain®

- All the water is emptied out of the Hot Tub through a drain located in the base. This prevents stagnant water and allows you to thoroughly clean the Hot Tub during change overs for your next guests.
- The Quick Drain® device reduces drain times by up to 50% compared to standard hose pipes or submersible pumps.



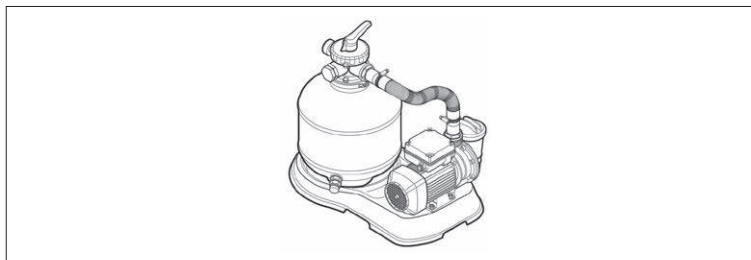
Heater or heat exchanger

- The Lodge+ range can be fitted with an upgraded electric heater or a heat exchanger, which is an inexpensive, green solution that exploits the heat produced by your facility's heating system or by renewable sources. To shorten heating time even further you can use the heat plus option in addition to the standard heater.



Sand filtration (optional)

- Optional sand filtration gives long standing assurance of hygiene and cleanliness because it traps the impurities in the water. It is easy to remove, must be cleaned on a regular basis and replaced when necessary.





Jacuzzi



LODGE+
COLLECTION

All Hot Tub dimensions are shown in: L x W x H

D DIRECT JETS
 M MINI JETS
 L LUXURY JETS
 P PULSATOR JETS

LODGE+



At rated voltage, the value may change based on fluctuations in the supply and the tolerance of the components.

CLASSIC STAINLESS STEEL JETS



Lodge+ L

5-6 Seats

DIMENSIONS

223 cm x 211 cm x 90 H cm

HOT TUB WEIGHT

at dry 348 kg • total filled weight 2.168 kg
floor load 550 kg/m²

AVERAGE VOLUME OF WATER USED 1.420 l

MAXIMUM CURRENT ABSORBED

with electric heater BLOWER 3,7 kW
HYDRO 4,9 kW / HYDRO+BLOWER 5,6 kW
with heat exchanger BLOWER 0,9 kW
HYDRO 2,0 kW / HYDRO+BLOWER 2,6 kW

TOTAL JETS BY TYPE: 38 + 14 BLOWER

9
5
2
8



Lodge+ M

4-5 Seats

DIMENSIONS

200 cm x 185 cm x 90 H cm

HOT TUB WEIGHT

at dry 260 kg • total filled weight 1.360 kg
floor load 453 kg/m²

AVERAGE VOLUME OF WATER USED 880 l

MAXIMUM CURRENT ABSORBED

with electric heater BLOWER 3,7 kW
HYDRO 4,9 kW / HYDRO+BLOWER 5,6 kW
with heat exchanger BLOWER 0,9 kW
HYDRO 2,0 kW / HYDRO+BLOWER 2,6 kW

TOTAL JETS BY TYPE: 32 + 12 BLOWER

6
7
3
4



Lodge+ S

2-3 Seats

DIMENSIONS

185 cm x 165 cm x 90 H cm

HOT TUB WEIGHT

at dry 245 kg • total filled weight 1.195 kg
floor load 488 kg/m²

AVERAGE VOLUME OF WATER USED 750 l

MAXIMUM CURRENT ABSORBED

with electric heater BLOWER 2,7 kW
HYDRO 3,9 kW / HYDRO+BLOWER 4,6 kW
with heat exchanger BLOWER 0,9 kW
HYDRO 2,0 kW / HYDRO+BLOWER 2,6 kW

TOTAL JETS BY TYPE: 26 + 10 BLOWER

5
3
8

SHELL COLOR



Platinum

PANELS COLOR



Silverwood



Roasted chestnut

PROVINYL COVER



Grey



x5-6



LODGE+ L



5 seats provide a comfortable place for your guests to sit and relax whilst an additional lounge seat allows another guest to fully immerse themselves in the water, Lodge+ L is ideal for larger holiday homes.



90 cm

223 cm



211 cm



CLEARARRAY®
UV



QUICK DRAIN®



MULTICOLOR

total jets: 38 idro + 14 blower

Hot Tub weight: at dry 348 kg • total filled weight 2.168 kg • floor load 550 kg/m²

maximum current absorbed:

with electric heater BLOWER 3,7 / HYDRO 4,9 / HYDRO+BLOWER 5,6 kW

with heat exchanger BLOWER 0,9 / HYDRO 2,0 / HYDRO+BLOWER 2,6 kW



With seating for 4 to 5 people, Lodge+ M is an ideal addition to any medium sized holiday home and features ergonomic seating, which provides a comfortable place for your guests to sit.



90 cm

200 cm



185 cm



CLEARRAY®
UV



QUICK DRAIN®



MULTICOLOR

total jets: 32 hidro + 12 blower

Hot Tub weight: at dry 260 kg • total filled weight 1.360 kg • floor load 453 kg/m²

maximum current absorbed:

with electric heater BLOWER 3,7 / HYDRO 4,9 / HYDRO+BLOWER 5,6 kW

with heat exchanger BLOWER 0,9 / HYDRO 2,0 / HYDRO+BLOWER 2,6 k







x2-3



LODGE+ S



Ideal for smaller holiday homes, Lodge+ S provides seating for 2 to 3 adults. 2 ergonomic seats allows your guests to sit in comfort whilst a third lounge seat provides a place for another guest to fully immerse their body.



90 cm



CLEARRAY®
UV



QUICK DRAIN®



MULTICOLOR

total jets: 26 hidro + 10 blower
 Hot Tub weight: at dry 245 kg • total filled weight 1.195 kg • floor load 488 kg/m²
 maximum current absorbed:
 with electric heater BLOWER 2,7 / HYDRO 3,9 / HYDRO+BLOWER 4,6 kW
 with heat exchanger BLOWER 0,9 / HYDRO 2,0 / HYDRO+BLOWER 2,6 kW

185 cm



165 cm





PROFESSIONAL COLLECTION

SASHA MI - ENJOY - SIENNA
B&B Sorrento Dream Resort - Italy



Features:

- Jacuzzi® PowerPro® Jets
- Blower (except Virtus)
- Premium LED Lighting
- Automatic water fill
- Quick Drain®
- ProVinyl Insulated cover
- In-ground installation

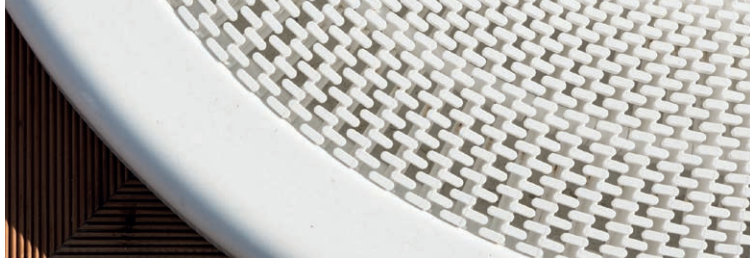
Optional features:

- Compensation tank
- Spa Pack Single-phase with or without heater 3,0 kW or with heat exchanger
- Spa Pack three-phase with or without heater 12,0 kW or with heat exchanger
- Ozone generator
- Booster kit: professional water analysis and control system

PROFESSIONAL COLLECTION

Overflow rim & automatic water fill

A distinctive feature of the Professional range is the 15° angled overflow grid around the surface of the Hot Tub. It collects surface water, which overflows through the grid to a compensation tank. The water is then moved through a filtration system, cleaned and pumped back into the base of the Hot Tub to be re-used. Thanks to the slant of the grid the water remains at Hot Tub deck level even if there is a rocking motion, so they can be installed on yachts and ships.



In-ground installation

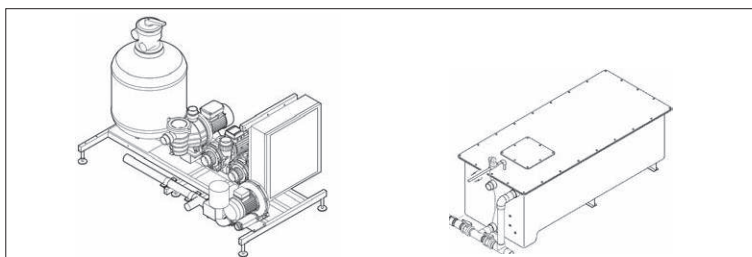
Different to a domestic Hot Tub, installation is in-ground and involves installing a separate Spa Pack and compensation tank to allow water to continuously move through a quartz sand filter where it is cleaned before flowing back into the tub for re-use.



Sand filter (Spa Pack) & compensation tank

The professional Spa Pack includes:

- Sand Filter (sand included)
- Set of pumps (hydromassage, circulation and blower compressor)
- With or without heating (electric heater or heat exchanger)
- Control system
- Compensation tank is available in a standard or low height.





VIRTUS PRO

PROFESSIONAL
COLLECTION

All Hot Tub dimensions are shown in: L x W x H



At rated voltage, the value may change based on fluctuations in the supply and the tolerance of the components.

JACUZZI® POWERPRO® JETS COLLECTION KEY



Virtus Pro

6-7 Seats
DIMENSIONS
 250 cm x 215 cm x 93 H cm
HOT TUB WEIGHT
 at dry 360 kg • total filled weight 2.400 kg
 floor load 390 kg/m² without integrated compensation tank
AVERAGE VOLUME OF WATER USED 1.500 l
MAXIMUM CURRENT ABSORBED
 Spa Pack with electric heater
 single-phase 5,2 kW
 three-phase 16,5 kW
 Spa Pack with heat exchanger
 single-phase 3,7 kW
 three-phase 4,5 kW
TOTAL JETS BY TYPE: 50



Enjoy Pro

6 Seats
DIMENSIONS
 250 cm x 250 cm x 98 H cm
HOT TUB WEIGHT
 at dry 250 kg • total filled weight 2.350 kg
 floor load 2.080 kg/m²
AVERAGE VOLUME OF WATER USED 1.700 l
MAXIMUM CURRENT ABSORBED
 Spa Pack with electric heater
 single-phase 5,8 kW
 three-phase 17,0 kW
 Spa Pack with heat exchanger
 single-phase 4,3 kW
 three-phase 5,0 kW
TOTAL JETS BY TYPE: 53 + 15 BLOWER



Virginia Pro

6-7 Seats
DIMENSIONS
 257 cm x 219 cm x 98 H cm
HOT TUB WEIGHT
 at dry 250 kg • total filled weight 2.350 kg
 floor load 2.080 kg/m²
AVERAGE VOLUME OF WATER USED 1.700 l
MAXIMUM CURRENT ABSORBED
 Spa Pack with electric heater
 single-phase 5,8 kW
 three-phase 17,0 kW
 Spa Pack with heat exchanger
 single-phase 4,3 kW
 three-phase 5,0 kW
TOTAL JETS BY TYPE: 50 + 16 BLOWER



Sienna Pro

7-8 Seats
DIMENSIONS
 257 cm x 219 cm x 98 cm
HOT TUB WEIGHT
 at dry 200 kg • total filled weight 1.960 kg
 floor load 2.063 kg/m²
AVERAGE VOLUME OF WATER USED 1.430 l
MAXIMUM CURRENT ABSORBED
 Spa Pack with electric heater
 single-phase 5,8 kW
 three-phase 17,0 kW
 Spa Pack with heat exchanger
 single-phase 4,3 kW
 three-phase 5,0 kW
TOTAL JETS BY TYPE: 46 + 16 BLOWER

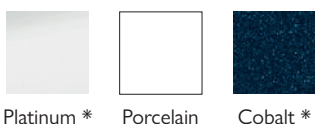


Alimia Pro

6-7 Seats
DIMENSIONS
 Ø 237 cm x 98 H cm
HOT TUB WEIGHT
 at dry 180 kg • total filled weight 1.840 kg
 floor load 543 kg/m²
AVERAGE VOLUME OF WATER USED 1.350 l
MAXIMUM CURRENT ABSORBED
 Spa Pack with electric heater
 single-phase 5,8 kW
 three-phase 17,0 kW
 Spa Pack with heat exchanger
 single-phase 4,3 kW
 three-phase 5,0 kW
TOTAL JETS BY TYPE: 44 + 16 BLOWER



SHELL COLOR



Platinum * Porcelain Cobalt *

PROVINYL COVER



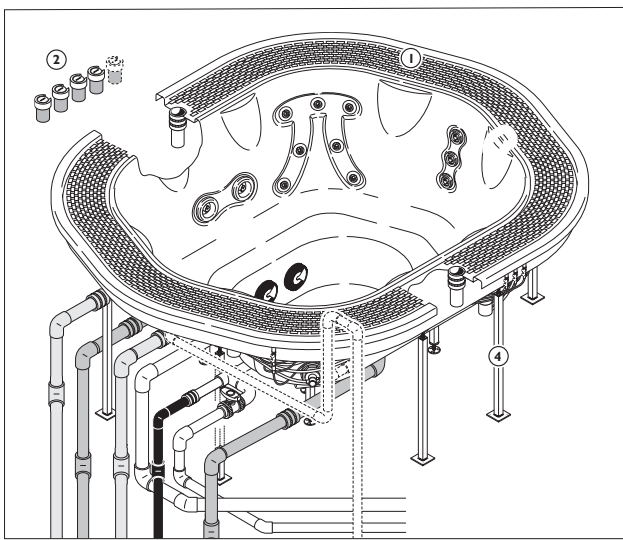
Ice

* Check on price list by model

Spa Pack

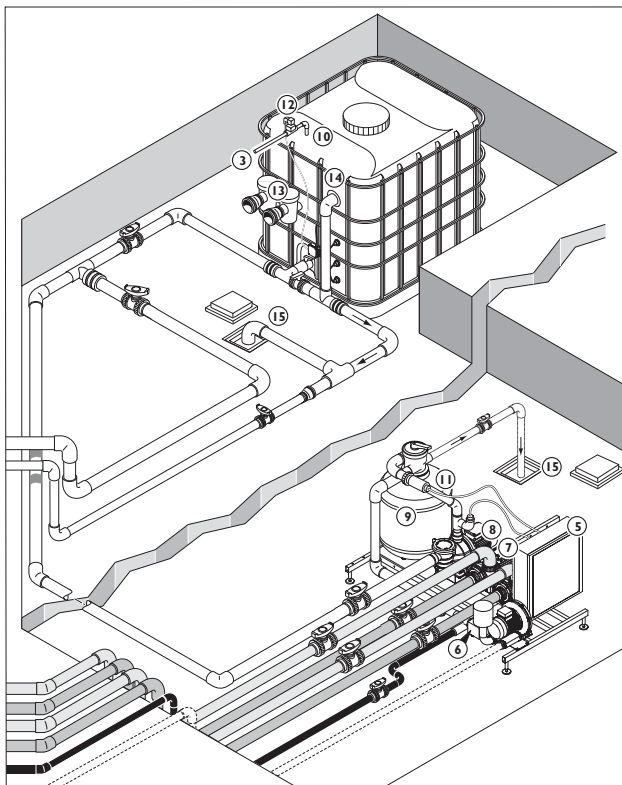
The Professional Hot Tubs baths are also distinguished by the very low noise level of the system. The Jacuzzi® technicians have in fact designed the set of pumps, the water heating system consisting of the electric heater and of the heatexchangers, the compressors for the blowers and an optional ozonizer (indispensable to further increase water quality) in an independent technical compartment (Spa Pack) that can be positioned at a distance of up to 6 metres.

Thanks to superior quality filtering, the quartz sand filter makes these Hot Tubs ideal for professional use. The filtered water flows back to the Hot Tub through the ground drainage point: this method, as well as offering the visual effect of an “underwater fountain”, sends the particles deposited at the bottom of the Hot Tub into circulation making them more likely to be captured by the jets that send the water to the filter. Although it is technically complex, the system is easy to manage even by home users by means of pneumatically controlled buttons.



Spa and piping system

- 1 Overflow channel with grid
- 2 Pneumatic buttons
- 3 Connections to plumbing
- 4 Perimeter metal supports

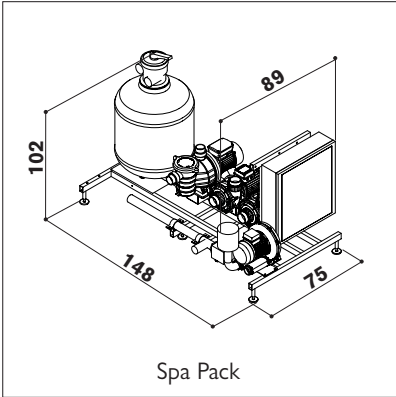


Spa Pack

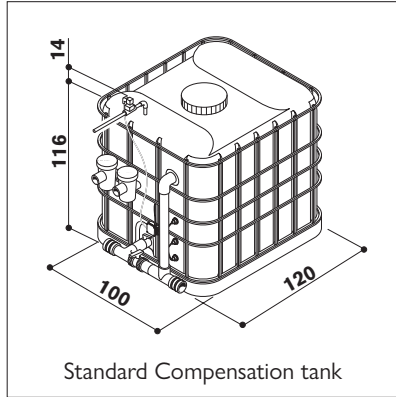
- 5 Electric wiring box
- 6 Optional:
 - 6a Heater (12 kW)
 - 6b Heat exchanger
- 7 Hydromassage pumps (2+2 hp)
- 8 Filtering pump
- 9 Quartz sand filter
- 10 Safety switch
- 11 Temperature sensor

Compensation tank

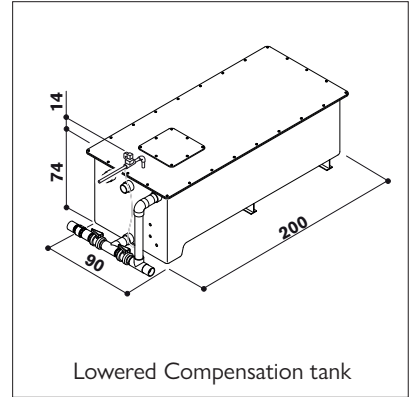
- 12 Water loading/filling solenoid valve (3/4")
- 13 Pre-filters
- 14 Overflow
- 15 Ground drainage points



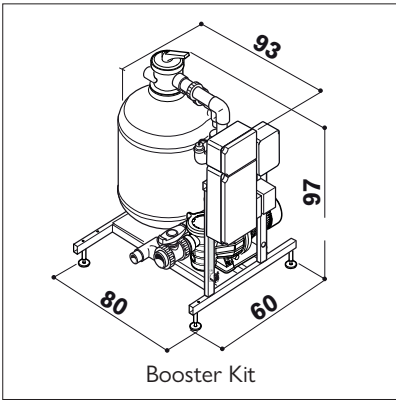
Spa Pack



Standard Compensation tank



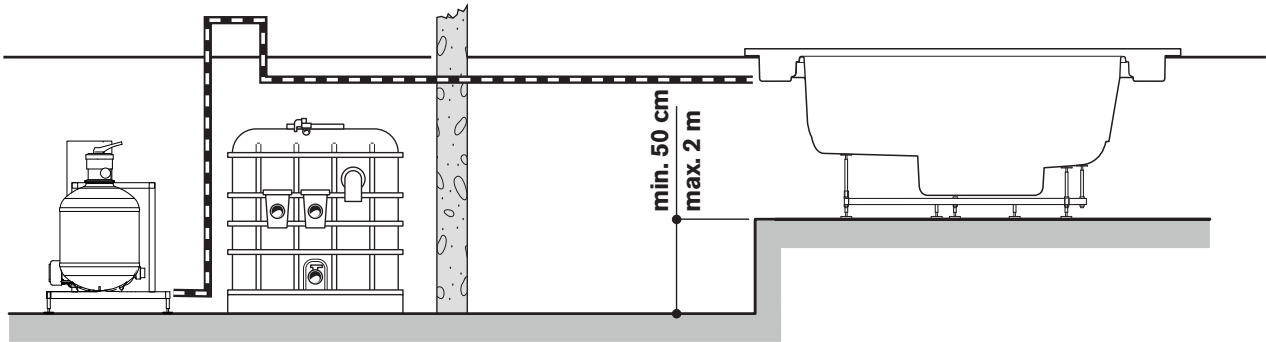
Lowered Compensation tank



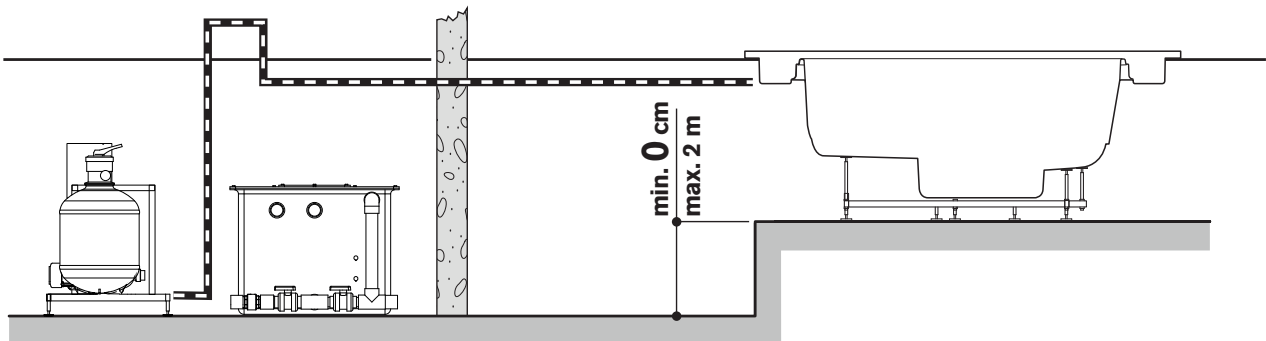
Booster Kit

Booster Kit

Professional water analysis and control system. A completely automated system for disinfection and PH control with additional filtering section and downloadable reports.



Spa Pack + Standard Compensation tank



Spa Pack + Lowered Compensation tank



x6-7



VIRTUS PRO

design
Dodo Arslan - Jacuzzi® Design



Inspired by the Nautilus seashell, the shell appears to be molded by water and it has a spiral shape that guarantees a quick and complete draining when emptied, avoiding stagnation.



93 cm

250 cm



215 cm



SAND FILTER



QUICK DRAIN®



LOW NOISE



MULTICOLOR

total jets: 50

Hot Tub weight: at dry 360 kg • total filled weight 2.450 kg • floor load 390 kg/m² without integrated compensation tank

maximum current absorbed: Spa Pack with electric heater
single-phase 5,2 kW • three-phase 16,5 kW

Spa Pack with heat exchanger single-phase 3,7 kW • three-phase 4,5 kW





ENJOY PRO

design
Kaluderovic & Condini



A large Hot Tub designed for use in public areas within hotels, swimming pools and wellness environments. Complete with a lounger this Hot Tub really offers your guests a full wellness journey.



98 cm

250 cm



250 cm



SAND FILTER



QUICK DRAIN®



LOW NOISE



MULTICOLOR

total jets: 38 idro + 15 blower

Hot Tub weight: at dry 250 kg • total filled weight 2.350 kg

floor load 2.080 kg/m²

maximum current absorbed:

Spa Pack with electric heater single-phase 5,8 kW • three-phase 17,0 kW

Spa Pack with heat exchanger single-phase 4,3 kW • three-phase 5,0 kW



A large commercial Hot Tub ideal for installation in public wellness environments. The practical corner entry steps ensure a safe, considerate and unobtrusive bathing experience.



98 cm

257 cm



219 cm



SAND FILTER



QUICK DRAIN®



LOW NOISE



MULTICOLOR

total jets: 34 hidro + 16 blower

Hot Tub weight: at dry 250 kg • total filled weight 2.350 kg

floor load 2.080 kg/m²

maximum current absorbed: Spa Pack with electric heater

single-phase 5,8 kW • three-phase 17,0 kW

Spa Pack with heat exchanger single-phase 4,3 kW • three-phase 5,0 kW



Our largest all seater commercial Hot Tub, designed for use in public environments and ideal for large groups. Spacious and comfortable this Hot Tub allows multiple users to relax and enjoy what a true Hot Tub experience should be.



98 cm

257 cm



219 cm



SAND FILTER



QUICK DRAIN®



LOW NOISE



MULTICOLOR

total jets: 30 Idro + 16 Blower

Hot Tub weight: at dry 200 kg • total filled weight 2.960 kg

floor load 2.063 kg/m²

maximum current absorbed: Spa Pack with electric heater

single-phase 5,8 kW • three-phase 17,0 kW

Spa Pack with heat exchanger single-phase 4,3 kW • three-phase 5,0 kW



The circular shape surpasses the concept of design. Roomy and comfortable, it is loved above all by those who consider physical wellness and intimacy of the same importance.



98 cm

Ø 238 cm



SAND FILTER



QUICK DRAIN®



LOW NOISE



MULTICOLOR

total jets: 28 hidro + 16 blower

Hot Tub weight: at dry 180 kg • total filled weight 1.840 kg

floor load 543 kg/m²

maximum current absorbed:

Spa Pack with electric heater single-phase 5,8 kW • three-phase 17,0 kW

Spa Pack with heat exchanger single-phase 4,3 kW • three-phase 5,0 kW







SWIM SPA COLLECTION





J-19 POWERPRO™

Features:

- FORM Smart Swim Goggles (PowerPro™ e PowerActive™)
- ProFinish™ Cabinetry
- Swim Selector Control (PowerPro™)
- Control ProTouch™
(PowerPro™ and PowerActive™)
- Control TP 600 (PowerPlay™)
- Jacuzzi® PowerPro® Jets
- Jacuzzi® PowerPro® Swim PX Jets (PowerPro™)
- Jacuzzi® PowerPro® Swim AX Jets (PowerActive™)
- Jacuzzi® PowerPro® Swim CX Jets (PowerPlay™)
- SteadySwim™ Buoyancy Jet
- Cleararray Active Oxygen™
Low output ozone generator + UV-C
- Quick Drain®
- Soft stride mat
- Illuminated Waterfall
- Light System LED Multicolour
- Exterior Running Lights
- Adjustable Headrests
- Status Indicator Light
- Auxiliary Heater By-Pass Loop

Optional features:

- Rowing Kit (factory fitted)
- Stainless Steel Exercise Bar (factory fitted)
- Aqua Fitness Package: dumbbells, paddles, gloves, noodle,
resistance band, floating belt
- Insulating hard cover ProLast™
- Floating cover
- Insulating Rollaway® cover
- Bracket for Rollaway® cover
- Swim Spa stairs 5 steps

SWIM SPA COLLECTION

Performance

The Jacuzzi® PowerPro® Swim Current jet is engineered to ensure water is flowing properly. The wide stream jet generates a smooth predictable current with no turbulence for an advanced swim experience.



Design

Best for both swimming and Relaxing. Hips in shell stop reflective wave. The suction jets are located at seated end to create conveyor belt effect for water flow.



Form Smart Swim Goggles

Smart swim goggles specifically calibrated for the Jacuzzi® PowerPro™ and PowerActive™ Swim Spas. Complete with optical display lens to view time, distance, stroke frequency and rhythm in real time. Compatible with GPS trace and heart rate measuring devices. The dedicated app allows users to customise training sessions, monitor the results and share them.





J-19 POWERPRO™

SWIM SPA
COLLECTION



At rated voltage, the value may change based on fluctuations in the supply and the tolerance of the components.



J-19 PowerPro™

4 Seats
DIMENSIONS
 564 cm x 236 cm x 135 cm
USEFUL SWIMMING AREA
 376 cm
SWIM SPA WEIGHT
 at dry 1.370 kg • total filled weight 10.400 kg
 floor load 1.500 kg/m²
AVERAGE VOLUME OF WATER USED
 9.050 l
MAXIMUM CURRENT ABSORBED
 with electric heater 16,0 kW
TOTAL JETS: 28 GETTI
PUMP 1: 3HP/2SPD/10/3A
PUMP 2: 3HP/2SPD/8.6/2.8A
PUMP 3: 3HP/2SPD/8.6/2.8A
PUMP 4: 3HP/2SPD/8.6/2.8A



J-19 PowerActive™

4 Seats
DIMENSIONS
 564 cm x 236 cm x 135 cm
USEFUL SWIMMING AREA
 376 cm
SWIM SPA WEIGHT
 at dry 1.370 kg • total filled weight 10.400 kg
 floor load 1.500 kg/m²
AVERAGE VOLUME OF WATER USED
 9.050 l
MAXIMUM CURRENT ABSORBED
 with electric heater 8,0 kW
TOTAL JETS: 28 GETTI
PUMP 1: 3HP/2SPD/10/3A
PUMP 2: 4HP/1SPD/12.7A



J-16 PowerPro™

4 Seats
DIMENSIONS
 472 cm x 236 cm x 135 cm
USEFUL SWIMMING AREA
 284 cm
SWIM SPA WEIGHT
 at dry 1.160 kg • total filled weight 8.800 kg
 floor load 1.500 kg/m²
AVERAGE VOLUME OF WATER USED
 7.650 l
MAXIMUM CURRENT ABSORBED
 with electric heater 16,0 kW
TOTAL JETS: 28 GETTI
PUMP 1: 3HP/2SPD/10/3A
PUMP 2: 3HP/2SPD/8.6/2.8A
PUMP 3: 3HP/2SPD/8.6/2.8A
PUMP 4: 3HP/2SPD/8.6/2.8A



J-16 PowerActive™

4 Seats
DIMENSIONS
 472 cm x 236 cm x 135 cm
USEFUL SWIMMING AREA
 284 cm
SWIM SPA WEIGHT
 at dry 1.160 kg • total filled weight 8.800 kg
 floor load 1.500 kg/m²
AVERAGE VOLUME OF WATER USED
 7.650 l
MAXIMUM CURRENT ABSORBED
 with electric heater 8,0 kW
TOTAL JETS: 28 GETTI
PUMP 1: 3HP/2SPD/10/3A
PUMP 2: 4HP/1SPD/12.7A



J-13 PowerPlay™

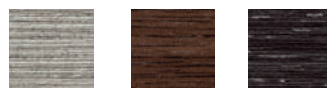
8 Seats
DIMENSIONS
 381 cm x 236 cm x 134 cm
USEFUL SWIMMING AREA
 244 cm
SWIM SPA WEIGHT
 at dry 980 kg • total filled weight 6.050 kg
 floor load 1.500 kg/m²
AVERAGE VOLUME OF WATER USED
 5.100 l
MAXIMUM CURRENT ABSORBED
 with electric heater 10,0 kW
TOTAL JETS: 36 GETTI
PUMP 1: 3HP/2SPD/10/3A
PUMP 2: 3HP/2SPD/10/3A
PUMP 3: 3HP/2SPD/10/3A

SHELL COLOR



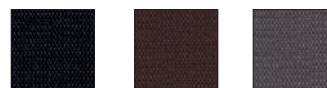
Platinum Porcelain Silver Pearl

CABINET PROFINISH™



Brushed Grey Modern Hardwood Smoked Ebony

PROLAST™ COVER



Black Brown Grey

ROLLAWAY®



Charcoal grey



J - 19 POWERPRO™



236 cm



564 cm

The Jacuzzi® PowerPro™ Swim Spa is equipped with Jacuzzi® PowerPro® PX jets designed to generate a strong, regular counter-current, ideal for intensive training all year round.



CLEARRAY
ACTIVE OXYGEN™



JACUZZI®
POWERPRO® PX



WATERFALL



QUICK DRAIN®



MULTICOLOR



FORM
GOGGLES

total jets: 28

useful swimming area: 376 cm

Swim Spa weight: at dry 1.370 kg • total filled weight 10.400 kg

floor load 1.500 kg/m²

maximum current absorbed with electric heater 16,0 kW





J-19 POWERACTIVE™



The Jacuzzi® Swim Spa PowerActive™ pool combines swimming, fitness and fun for the whole family, all year round.



CLEARRAY
ACTIVE OXYGEN™



JACUZZI®
POWERPRO® AX



WATERFALL



QUICK DRAIN®



MULTICOLOR



FORM
GOGGLES

236 cm



544 cm

total jets: 28

useful swimming area: 376 cm

Swim Spa weight: at dry 1.370 kg • total filled weight 10.400 kg

floor load 1.500 kg/m²

maximum current absorbed with electric heater 8,0 kW



The Jacuzzi® Swim Spa PowerPro™ pool offers optimum comfort for both swimming and water aerobics. Ideal for intensive training.



CLEARRAY
ACTIVE OXYGEN™



JACUZZI®
POWERPRO® PX



WATERFALL



QUICK DRAIN®



MULTICOLOR



FORM
GOGGLES

236 cm



472 cm

total jets: 28

useful swimming area: 284 cm

Swim Spa weight: at dry 1.160 kg • total filled weight 8.800 kg

floor load 1.500 kg/m²

maximum current absorbed with electric heater 16,0 kW





The 5-metre Jacuzzi® Swim Spa PowerActive™ pool offers a continual and regular current for a complete swimming experience. Ideal entertainment for the whole family.



CLEARRAY
ACTIVE OXYGEN™



JACUZZI®
POWERPRO® AX



WATERFALL



QUICK DRAIN®



MULTICOLOR



FORM
GOGGLES

236 cm



472 cm

total jets: 28

useful swimming area: 284 cm

Swim Spa weight: at dry 1.160 kg • total filled weight 8.800 kg

floor load 1.500 kg/m²

maximum current absorbed with electric heater 8,0 kW







Jacuzzi® Swim Spa PowerPlay™ is unique and offers two functions in one. As a Swim Spa, it is ideal for training in your home garden by being able to adapt to the smallest of spaces. As a Hot Tub, on the other hand, it is ideal for relaxing with family and friends, thanks to its large size and its ergonomic, comfortable eight seats.



CLEARRAY
ACTIVE OXYGEN™



JACUZZI®
POWERPRO® CX



MULTICOLOR



- total jets: 36
- useful swimming area: 244 cm
- Swim Spa weight: at dry 980 kg • total filled weight 6.050 kg
- floor load 1.500 kg/m²
- maximum current absorbed with electric heater 10,0 kW





SHELL COLOURS

ACRYLIC

COLLECTION	Platinum	Porcelain	Silver Pearl	Midnight	Cobalt
J-500™	×				
J-400™	×	×	×	×	
J-300™	×	×	×	×	
DESIGN	×*	×			×*
LODGE+	×	×			
PROFESSIONAL	×	×			×*
SWIM SPA	×	×	×		

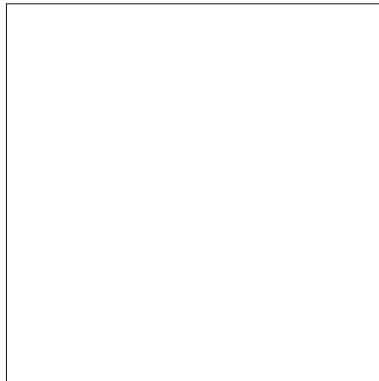
* Check on price list by model

Colour options may vary from country to country. Please check with local retailer.

PLATINUM



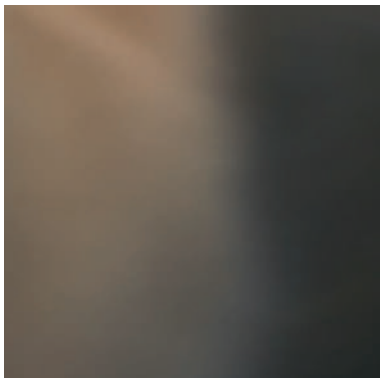
PORCELAIN



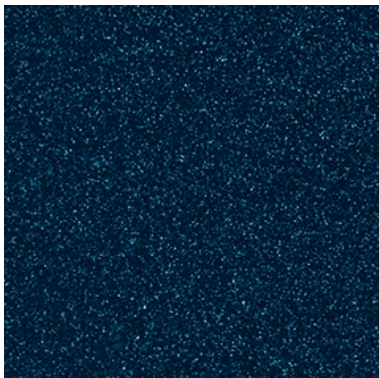
SILVER PEARL



MIDNIGHT



COBALT





CABINET COLOR

COLLECTION	CURVALUX™	PROFINISH™		
	Silverwood	Brushed Grey	Modern Hardwood	Smoked Ebony
J-500™	×			
J-400™		×	×	×
J-300™		×	×	×
SWIM SPA		×	×	×

Colour options may vary from country to country. Please check with local retailer.

CURVALUX™

SILVERWOOD

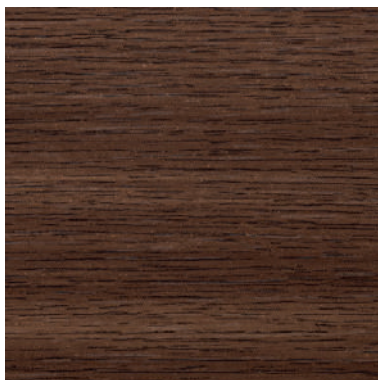


PROFINISH™

BRUSHED GREY



MODERN HARDWOOD



SMOKED EBONY



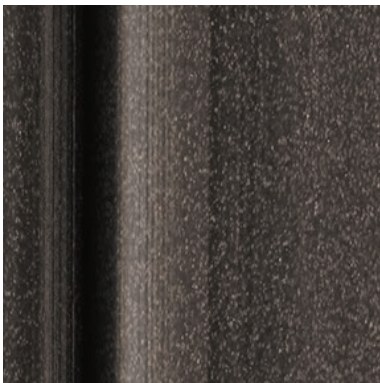


CABINET COLOR				
	SYNTHETIC WOOD			WOOD
COLLECTION	Silverwood	Roasted Chestnut	Graphite	Teak
DESIGN			X*	X*
LODGE+	X	X		

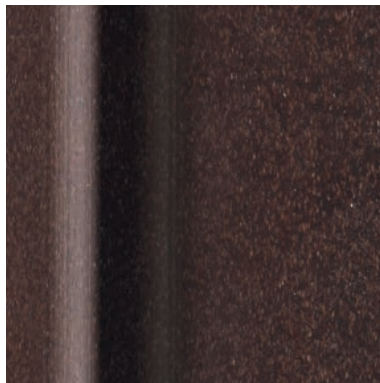
* Check on price list by model
 Colour options may vary from country to country. Please check with local retailer.

Synthetic wood

SILVERWOOD



ROASTED CHESTNUT



GRAPHITE

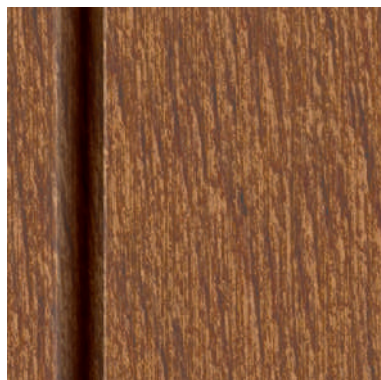


Wood

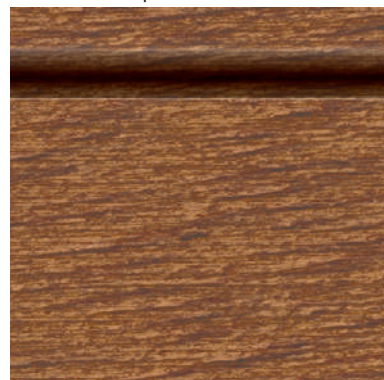
TEAK



TEAK - Profile



TEAK - Unique





CABINET COLOR

	COMPOSITE-PVC		OUTDOOR FABRIC	
COLLECTION	White Oak	Grey Oak	Turquoise/White	Brown/White
DESIGN	City™ Spa Unique	City™ Spa Unique	Skylounge®	Skylounge®

Colour options may vary from country to country. Please check with local retailer.

Composite-PVC

WHITE OAK

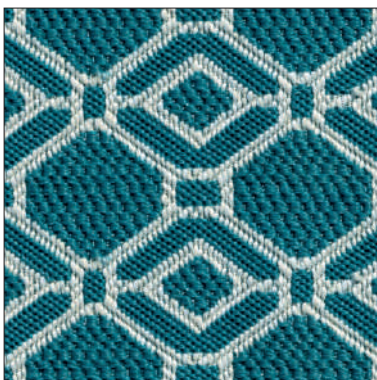


GREY OAK



Outdoor fabric

TURQUOISE/WHITE

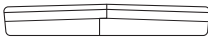
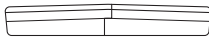
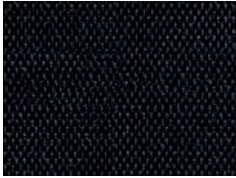

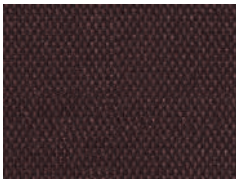
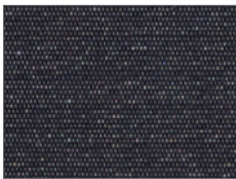



BROWN/WHITE



COVER



Collection	J-500™ / J-400™ / J-300™ / J-200™ / SWIM SPA	DESIGN / PROFESSIONAL / LODGE+
Typology	PROLAST™	PROVINYL
Features	<p>Premium outdoor cover - 25% lighter - Water resistant - Superior UV resistance properties.</p> <p>Engineered for durability from superior marine-grade material, Jacuzzi® PROLAST™ Covers are 25% lighter for easier handling and add a premium touch to your outdoor decor.</p>	<p>Premium outdoor cover Water resistant Superior UV resistance properties.</p> <p>Engineered for durability from superior marine-grade material, Jacuzzi® Covers are easy to handle and add a premium touch to your outdoor decor.</p>
Foam density	~ 24 Kg/m ³	~ 24 Kg/m ³
Material	All-weather PROLAST™ Marine-grade fabric	Vinyl (PVC plasticized and polyester)
Taper	 <p>~ 100 - 65 mm</p>	 <p>~ 100 - 65 mm</p>
Cover handles	6 Exterior + 2 Interior	from 2 to 6 Exterior + 2 Interior
Color	<p>J-500™ / J-400™ / J-300™ / J-200™</p>  <p>BLACK</p>	<p>DESIGN / PROFESSIONAL</p>  <p>ICE</p>
	<p>SWIM SPA</p>  <p>BROWN</p>	<p>LODGE+</p>  <p>GREY</p>
	<p>SWIM SPA</p>  <p>GREY</p>	

ACCESSORIES



Your new Jacuzzi® Hot Tub and Swim Spa is not complete without some essential accessories that help you adapt to your new Hot Tub lifestyle more easily. Customise your Hot Tub area and create an exclusive space that is practical but also exquisite in garden furniture design.



VERSASTEPTM



COVER LIFTER HYDRAULIC ASSIST



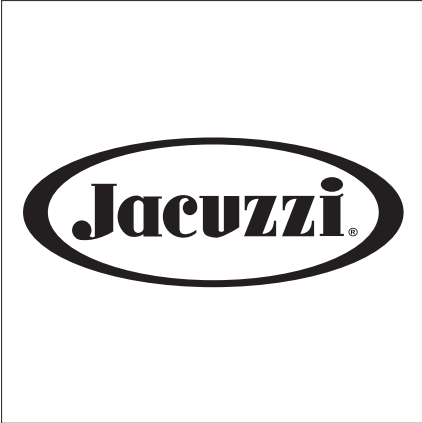
COVER SWIM SPA





CUSTOMER SERVICE AND ON-GOING COMMITMENT

Showroom



When you have an idea of the Hot Tub model that will suit your needs, you can see the real thing at your nearest showroom. Our experienced sales force will then take you through the purchase process and in many instances give you're the opportunity to try out Hot Tubs in demonstration areas. For more information on the technical features of the products, please consult the website www.jacuzzi.com where you will find a list of authorised dealers you can contact.

Delivery



Once you have selected the Hot Tub you can arrange for it to be delivered. This part of the process involves us scoping out the fitting area, the location of your home and the logistics of bringing the tub to you.

Fitting



After the electrical work & level base have been completed, Jacuzzi® will send their expert fitter to connect the Hot Tub to its designated power source. They will then fill the tub to the right level and then demonstrate the correct way to use it.



Aftercare



With the Hot Tub installed and being used at your leisure, it's good to know that Jacuzzi® is always on hand to deal with any questions, offer tips and recommend the best ways to keep your unit running smoothly.

Warranty



All our Hot Tubs carry a standard 2 year warranty to provide you with superb peace of mind. the 2 year warranty is for EU countries only. For other markets please check with local retailer.

The descriptions and images of the products in this catalogue are only indicative and are not binding for the purposes of their use. Jacuzzi Europe reserves the right to make any changes to the products deemed appropriate at any time and without notice.

©2017 Jacuzzi® Hot Tubs. All rights reserved. Jacuzzi® is a registered trademark of Jacuzzi® Inc. used with permission. All other brands, product names, company names, trade names, trademarks and service marks used are the property of their respective owners. Specifications may change without notice. Dimensions are approximate.



JACUZZI EUROPE S.p.A.

Direzione e Coordinamento
Jacuzzi Brands, LLC. (USA)
S.S. Pontebbana km 97,200
33098 Valvasone Arzene (PN) Italia

Via Copernico 38
20125 Milano (Italia)

Tel. +39-0434-859111
Fax +39-0434-85278

www.jacuzzi.com
info@jacuzzi.eu

COLLECTION HOT TUB AND SWIM SPA
EN - COD 220103994 - 2021/22