

# Crystal Water Collection

  
GLASS DESIGN  
I T A L Y



Crystal Water Collection

CWT

CWF

***“Acqua Cristallina”***

Ispirati dalla più alta definizione di acqua e guidati dal know-how acquisito negli anni nella lavorazione del cristallo nasce la collezione di rubinetti da piano e da parete Crystal Water.

Un omaggio all'intersezione di trasparenze sempre uniche e mutevoli che esaltano l'incidenza della luce.

Due espressioni creative che avvolgono e fanno proprio il classico e il contemporaneo in un modo esclusivo appartenente al lusso e alle emozioni.

Purezza e raffinatezza dei tagli del cristallo, metalli eleganti ed esclusivi, si uniscono per dare vita a ciò che non immagini.

Abbinati i lavabi coordinati creano un matching che rende unico il microcosmo dell'area bagno.

*Benvenuti nella*

**Crystal Water Collection**

***“Crystal Clear Water”***

*Inspired by water in its purest sense and guided by the extensive know-how acquired over the years in the processing of crystal, we present the collection of deck and wall mounted taps, Crystal Water. A design tribute to the visual impact of transparency and the unique and fluid way it harnesses and magnifies the presence of light.*

*Two expressions of creativity embodying the classic and contemporary in an exclusive manner that exudes luxury and emotion.*

*The purity and refinement of cut crystal combined with elegant and exclusive fine metals give life and form to unimaginable beauty. Teamed with coordinating washbasins Crystal Water ensures the creation of a distinctive and truly exquisite bathroom/cloakroom environment.*

*Presenting the*

**Crystal Water Collection**

# INDICE INDEX

## CWT CRYSTAL WATER TOWER

Rubinetto da piano XL <i>Deck-mounted faucet XL</i>	6-23
Rubinetto da piano SMALL <i>Deck-mounted faucet SMALL</i>	24
SCHEDA DATA SHEET	26

## CWF CRYSTAL WATER FALL

Rubinetto a parete MONO <i>Wall-mounted faucet MONO</i>	30-39
Rubinetto a parete DOUBLE <i>Wall-mounted faucet DOUBLE</i>	40-43
SCHEDA DATA SHEET	44



CRYSTAL WATER TOWER

Celare preziosamente l'ascesa dell'acqua  
per poi liberarla arricchita dai riflessi del cristallo in un gioco silenzioso di purezza

**CWT**

*Skilfully concealing the rise of water  
to then silently release it, its purity wonderfully enriched by the reflections of cut crystal*



# CWT ICE

Rubinetto da piano in cristallo trasparente e ottone finitura satin gold  
*Deck-mounted faucet in clear crystal and satin gold finish brass*  
CRYSTAL WATER TOWER ICE XL - **code CWTICEXLT01F19**

Lavabo in cristallo trasparente con piletta a scarico libero e base anello finitura satin gold  
*Clear crystal washbasin with free flow waste and base ring in satin gold finish*  
SCENIC ICE - **code SCENICICET01GDS**





# CWT ICE

Rubinetto da piano in cristallo trasparente e ottone finitura satin nikel  
*Deck-mounted faucet in clear crystal and satin nickel finish brass*  
CRYSTAL WATER TOWER ICE XL - **code CWTICEXLT01F18**

Lavabo in cristallo trasparente con piletta a scarico libero e base anello finitura satin nikel  
*Clear crystal washbasin with free flow waste and base ring in satin nickel finish*  
ICE OVAL - **code ICEOVT01F18**





# CWT RAMADA

Rubinetto da piano in cristallo trasparente e ottone finitura champagne  
*Deck-mounted faucet in clear crystal and champagne finish brass*  
CRYSTAL WATER TOWER RAMADA XL - **code CWTRAMXLT01F15**

Lavabo in cristallo trasparente con piletta a scarico libero e base anello finitura champagne  
*Clear crystal washbasin with free flow waste and base ring in champagne finish*  
SCENIC RAMADA - **code SCENICRAMT01F15**





# CWT RAMADA

Rubinetto da piano in cristallo trasparente e ottone finitura rutenio  
*Deck-mounted faucet in clear crystal and rutenio finish brass*  
CRYSTAL WATER TOWER RAMADA XL - **code CWTRAMXLT01F14**

Lavabo in cristallo trasparente con piletta a scarico libero e base anello finitura rutenio  
*Clear crystal washbasin with free flow waste and base ring in rutenio finish*  
RAMADA - **code RAMADAT01F14**





# CWT RAMADA

Rubinetto da piano in cristallo trasparente e ottone finitura oro lucido  
*Deck-mounted faucet in clear crystal and glossy gold finish brass*  
CRYSTAL WATER TOWER RAMADA XL - **code CWTRAMXLT01F3**

Lavabo in cristallo trasparente con piletta a scarico libero finitura oro lucido  
*Clear crystal washbasin with free flow waste in glossy gold finish*  
VILLA XL - **code VILLAXLT01GDF3**





# CWT CLIVIA

Rubinetto da piano in cristallo trasparente e ottone finitura brunito  
*Deck-mounted faucet in clear crystal and brunito finish brass*  
CRYSTAL WATER TOWER CLIVIA XL - **code CWTCLIXLT01F17**

Lavabo in alluminio finitura mat bronze  
*Aluminium washbasin in mat bronze finish*  
ICONIK KATINO 40 - **code ICONIKMBZ**

Piletta a scarico libero finitura bronzo  
*Free flow waste in bronze finish*  
- **code SCBZ**





# CWT CLIVIA

Rubinetto da piano in cristallo trasparente e ottone finitura cromo  
*Deck-mounted faucet in clear crystal and chrome finish brass*  
CRYSTAL WATER TOWER CLIVIA XL - **code CWTCLIXLT01F4**

Lavabo in cristallo trasparente  
*Clear crystal washbasin*  
CLIVIA - **code CLIVIAT01**

Piletta a scarico libero finitura cromo  
*Free flow waste in chrome finish*  
- **code SCCR**

Base anello in ottone finitura cromo  
*Base ring in chrome finish brass*  
- **code ANF4**





# CWT CLIVIA

Rubinetto da piano in cristallo trasparente e ottone finitura oro lucido  
*Deck-mounted faucet in clear crystal and glossy gold finish brass*  
CRYSTAL WATER TOWER CLIVIA XL - **code CWTCLIXLT01F3**

Lavabo in cristallo trasparente  
*Clear crystal washbasin*  
CLIVIA - **code CLIVIAT01**

Piletta a scarico libero finitura oro lucido  
*Free flow waste in glossy gold finish*  
- **code SCGD**

Base anello in ottone finitura oro lucido  
*Base ring in glossy gold finish brass*  
- **code ANF3**

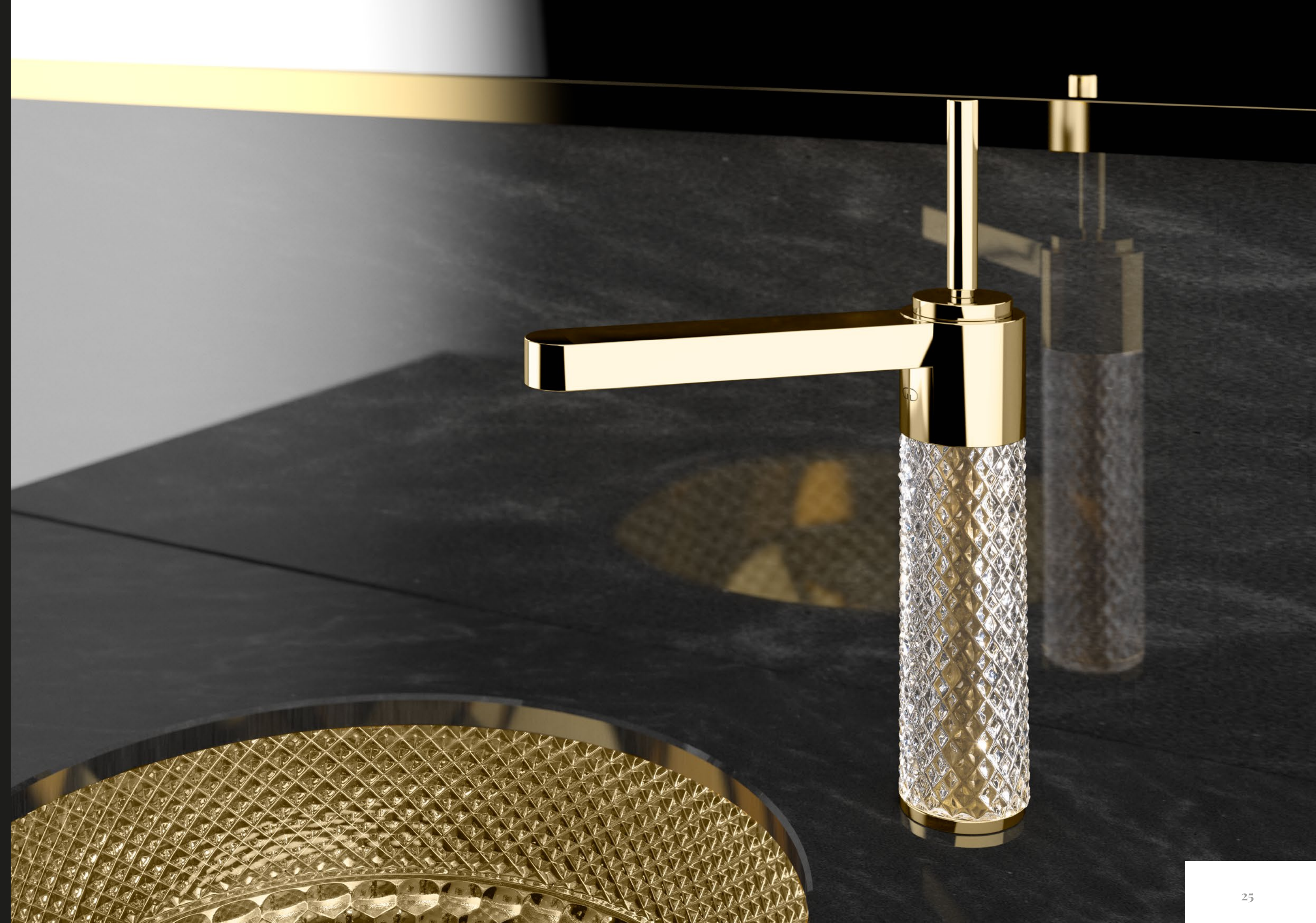




# CWT RAMADA

Rubinetto da piano in cristallo trasparente e ottone finitura oro lucido  
*Deck-mounted faucet in clear crystal and glossy gold finish brass*  
CRYSTAL WATER TOWER RAMADA SMALL - **code CWTRAMST01F3**

Lavabo sottopiano in cristallo finitura gold con piletta a scarico libero finitura oro lucido  
*Crystal undermount washbasin in gold finish with glossy gold free flow waste*  
RAMADA LUX SOTTO - **code RAMADASGDF3**





# CRYSTAL WATER TOWER

Miscelatore monocomando realizzato in ottone, rivestito in cristallo trasparente, molato interamente a mano con mole a pietra.  
I componenti in metallo sono prodotti in ottone CW617N certificato, disponibili in 7 finiture.

## CARATTERISTICHE TECNICHE:

- Applicazione: lavabo da appoggio ( versione XL) o lavabo sottopiano ( versione SMALL)
- Monocomando per lavabi senza troppopieno
- Cartuccia italiana certificata
- Areatore Slim Air - filetto M24x1 - SSR (angolo getto regolabile)
- 2x tubo flessibile con calotta filetto F3/8"
- Diametro foro su top Ø 35 mm
- Pressione max 5 bar
- Portata max 7,00 l/min (3 bar)
- Set di fissaggio con perno M8 e flangia di rinforzo inclusi

## CERTIFICAZIONI:

OTTONE EU CW617N  
CARTUCCIA ITALIANA  
AREATORE REGOLABILE  
FLESSIBILI Made in Italy

Su specifica richiesta, il prodotto può essere realizzato in ottone certificato USA CW511L o INOX EN 10204 / 3.1

*Tutti i prodotti testati sotto pressione. Pezzi di ricambio, per cristallo e componentistica in ottone, disponibili su richiesta.  
Si consiglia l'installazione di rubinetti sottolavabo con filtri e chiusura, per consentire l'attività di manutenzione, senza dover ricorrere alla chiusura dell'allaccio generale dell'acqua.*

*Monolever mixer tap in brass combined with clear crystal, entirely hand-cut on stone.  
The brass metal components are CW617N certified and available in 7 finishes.*

## TECHNICAL CHARACTERISTICS:

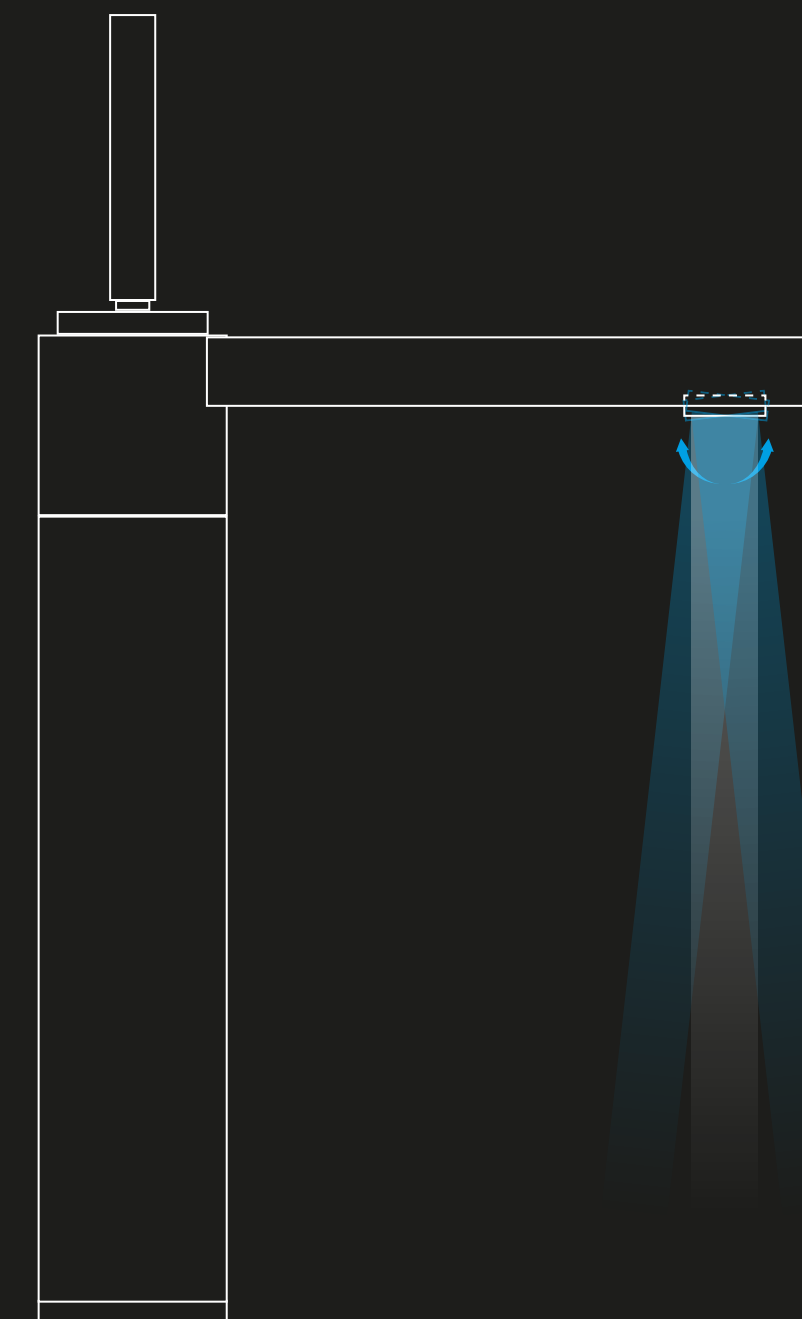
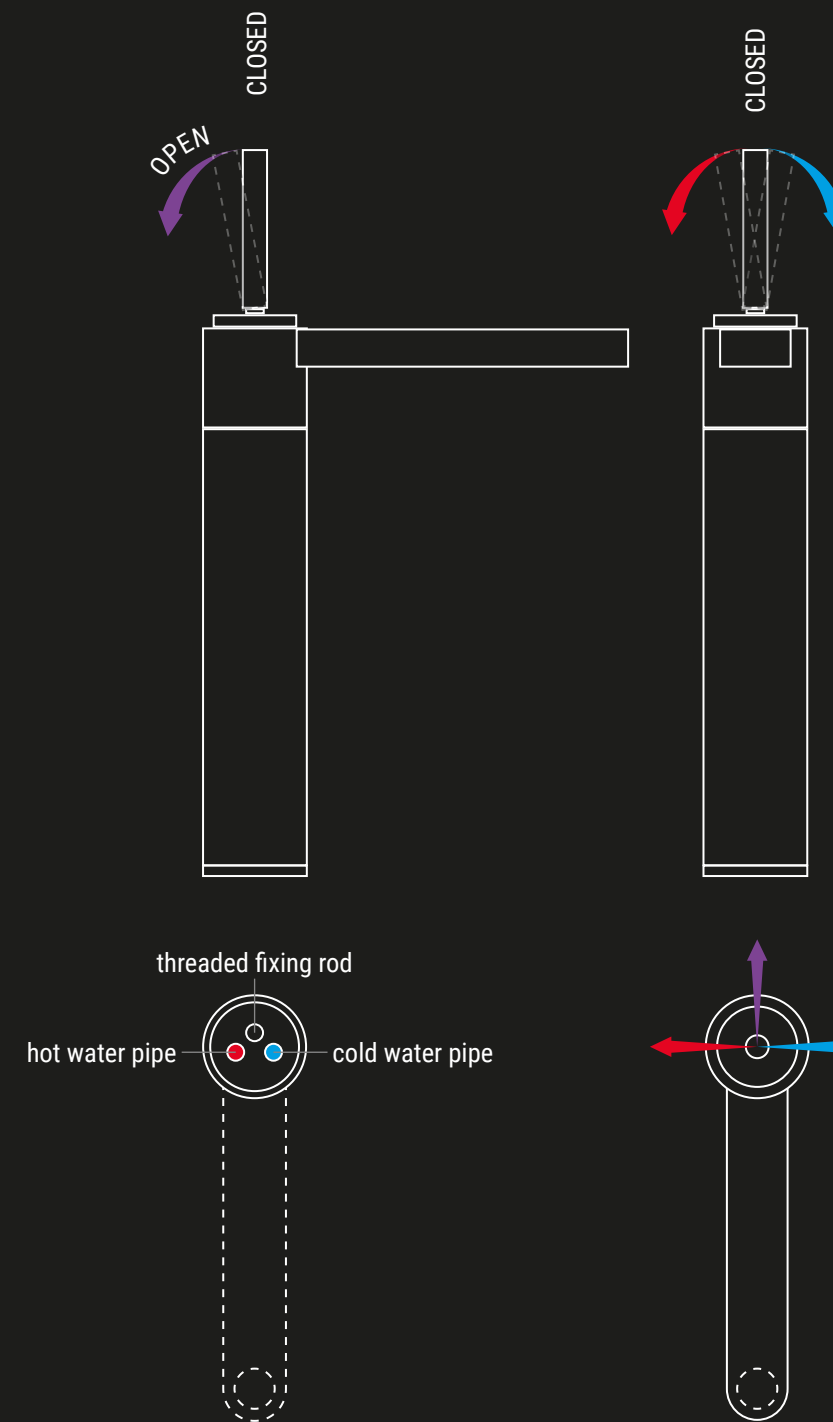
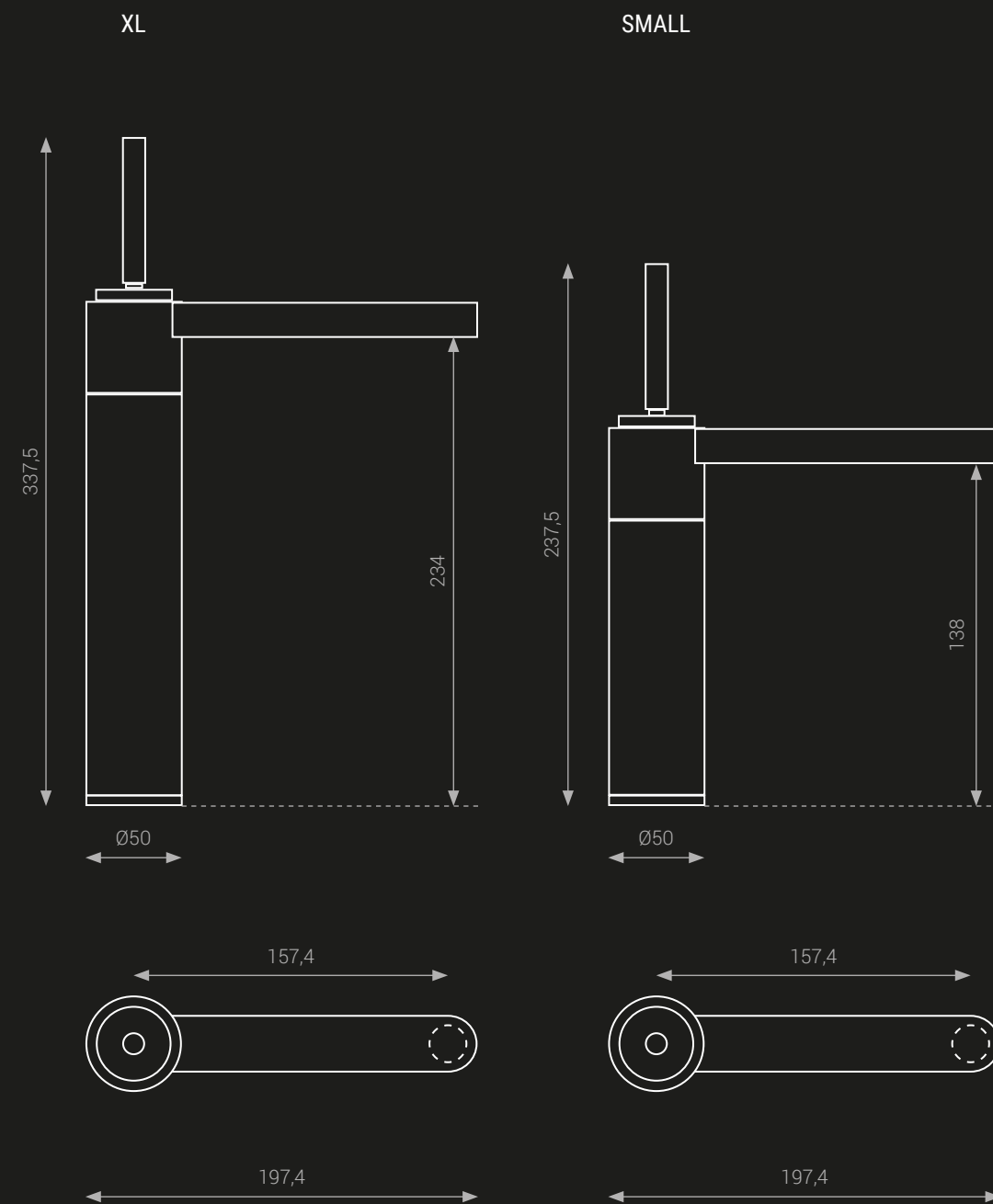
- Application: with countertop basins (XL version) or undermount basins (SMALL version)
- Single-lever mixer for washbasins without overflow
- Cartridge certified in Italy
- Slim Air Aerator - M24x1 threaded – SSR (direction adjustable outlet)
- 2 x flexible connector with F3/8" thread
- Diameter of top hole Ø 35 mm
- Maximum pressure 5 bar
- Max flow rate 7.00 l/min (3 bar)
- Kit with M8 fixing and reinforcement flange included

## CERTIFICATIONS:

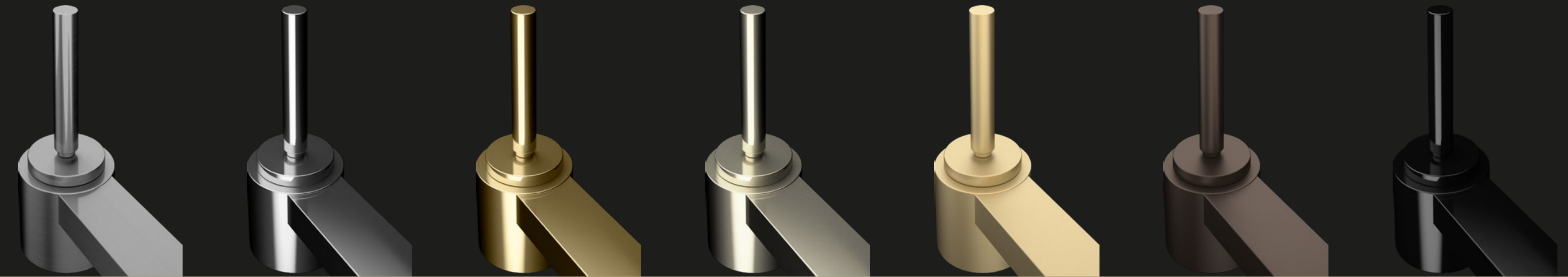
BRASS EU CW617N  
ITALIAN CARTRIDGE  
ADJUSTABLE AERATOR  
FLEXIBLES Made in Italy

*On request, the product can be made from USA CW511L certified brass or INOX EN 10204 / 3.1*

*All products have been pressure tested.  
Both the crystal and brass spare-part components are available on request.  
An installation complete with filters and isolation connectors is recommended to enable maintenance without the need to close off the main water supply*



# CRYSTAL WATER TOWER



**ICE**



**satin nickel**  
F18

clear/satin nickel  
CWTICEXLT01F18

clear/satin nickel  
CWTICEST01F18

**chrome**  
F4

clear/chrome  
CWTICEXLT01F4

clear/chrome  
CWTICEST01F4

**gold**  
F3

clear/gold  
CWTICEXLT01F3

clear/gold  
CWTICEST01F3

**champagne**  
F15

clear/champagne  
CWTICEXLT01F15

clear/champagne  
CWTICEST01F15

**satin gold**  
F19

clear/satin gold  
CWTICEXLT01F19

clear/satin gold  
CWTICEST01F19

**brunito**  
F17

clear/brunito  
CWTICEXLT01F17

clear/brunito  
CWTICEST01F17

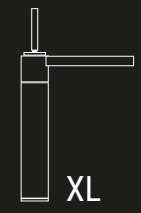
**rutenio**  
F14

clear/rutenio  
CWTICEXLT01F14

clear/rutenio  
CWTICEST01F14



**RAMADA**



clear/satin nickel  
CWTRAMXLT01F18

clear/satin nickel  
CWTRAMST01F18

clear/chrome  
CWTRAMXLT01F4

clear/chrome  
CWTRAMST01F4

clear/gold  
CWTRAMXLT01F3

clear/gold  
CWTRAMST01F3

clear/champagne  
CWTRAMXLT01F15

clear/champagne  
CWTRAMST01F15

clear/satin gold  
CWTRAMXLT01F19

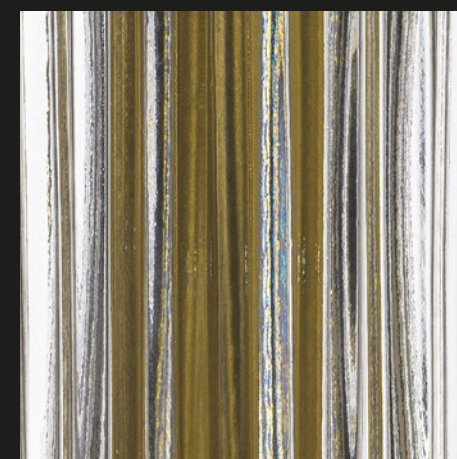
clear/satin gold  
CWTRAMST01F19

clear/brunito  
CWTRAMXLT01F17

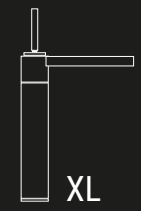
clear/brunito  
CWTRAMST01F17

clear/rutenio  
CWTRAMXLT01F14

clear/rutenio  
CWTRAMST01F14



**CLIVA**



clear/satin nickel  
CWTCLIXLT01F18

clear/satin nickel  
CWTCLIST01F18

clear/chrome  
CWTCLIXLT01F4

clear/chrome  
CWTCLIST01F4

clear/gold  
CWTCLIXLT01F3

clear/gold  
CWTCLIST01F3

clear/champagne  
CWTCLIXLT01F15

clear/champagne  
CWTCLIST01F15

clear/satin gold  
CWTCLIXLT01F19

clear/satin gold  
CWTCLIST01F19

clear/brunito  
CWTCLIXLT01F17

clear/brunito  
CWTCLIST01F17

clear/rutenio  
CWTCLIXLT01F14

clear/rutenio  
CWTCLIST01F14



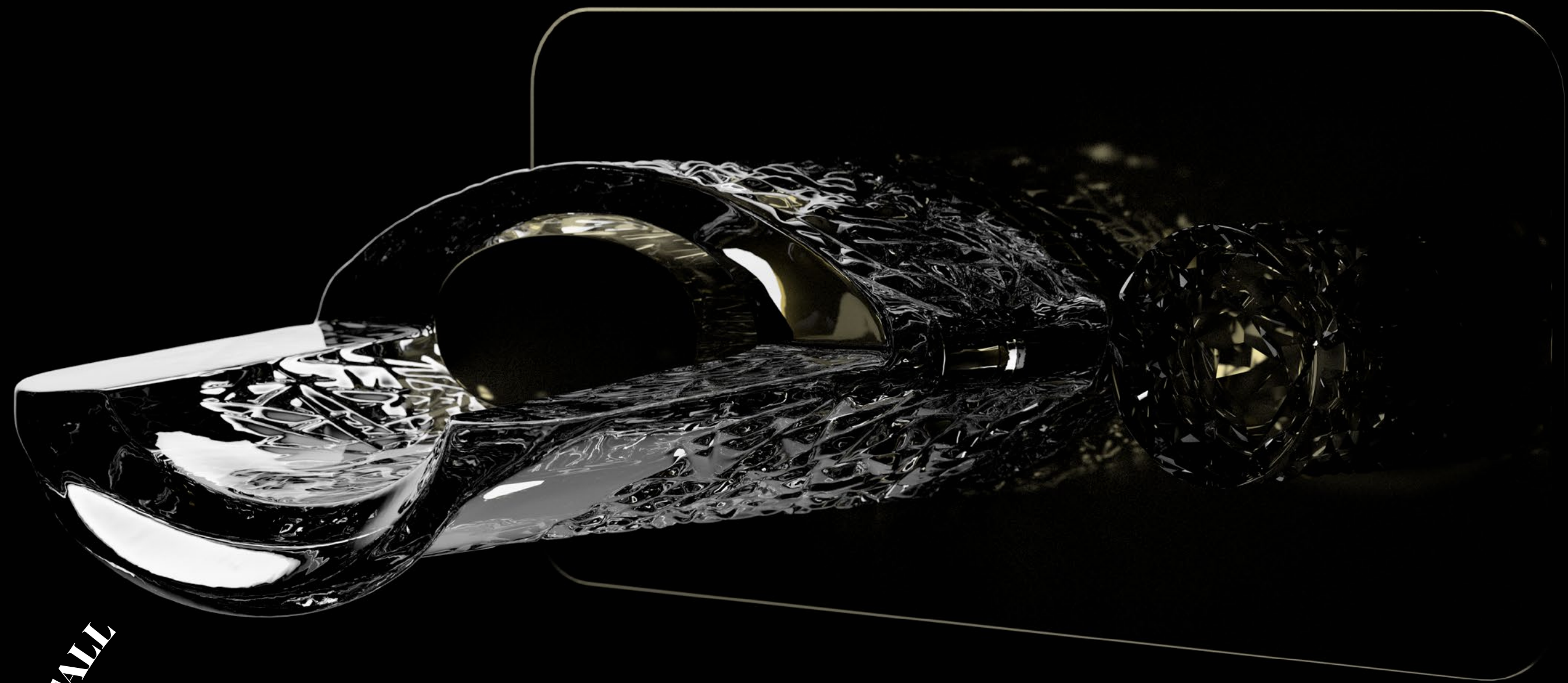
Un'emozione intima.  
Scorrere, scivolare, animare la purezza del cristallo attimo dopo attimo in uno scenario inconsueto e meraviglioso come di fronte a un fenomeno naturale.

**CWF**

design by: Vincenzo Missanelli

*An intimate experience.  
Flowing, gliding, constantly animating the purity of the crystal in a captivating spectacle not dissimilar to that of a natural phenomenon.*

CRYSTAL WATER FALL





# CWF RAMADA

Rubinetto a parete in cristallo trasparente, maniglia in cristallo trasparente/oro e ottone finitura oro lucido  
*Wall-mounted faucet in clear crystal, with handle in clear/gold crystal and glossy gold finish brass*  
CRYSTAL WATER FALL RAMADA MONO - **code CWFRAMTGDF3**

Lavabo in cristallo trasparente con piletta a scarico libero e base anello finitura oro  
*Clear crystal washbasin with free flow waste and base ring in glossy gold finish*  
SCENIC RAMADA - **code SCENICRAMT01F3**





# CWF ICE

Rubinetto a parete in cristallo trasparente, maniglia in cristallo trasparente/argento e ottone finitura cromo  
*Wall-mounted faucet in clear crystal, with handle in clear/silver crystal and chrome finish brass*  
CRYSTAL WATER FALL ICE MONO - code **CWFICETSLF4**

Lavabo in cristallo trasparente con piletta a scarico libero e base anello finitura cromo  
*Clear crystal washbasin with free flow waste and base ring in chrome finish*  
ICE OVAL - code **ICEOVT01F4**



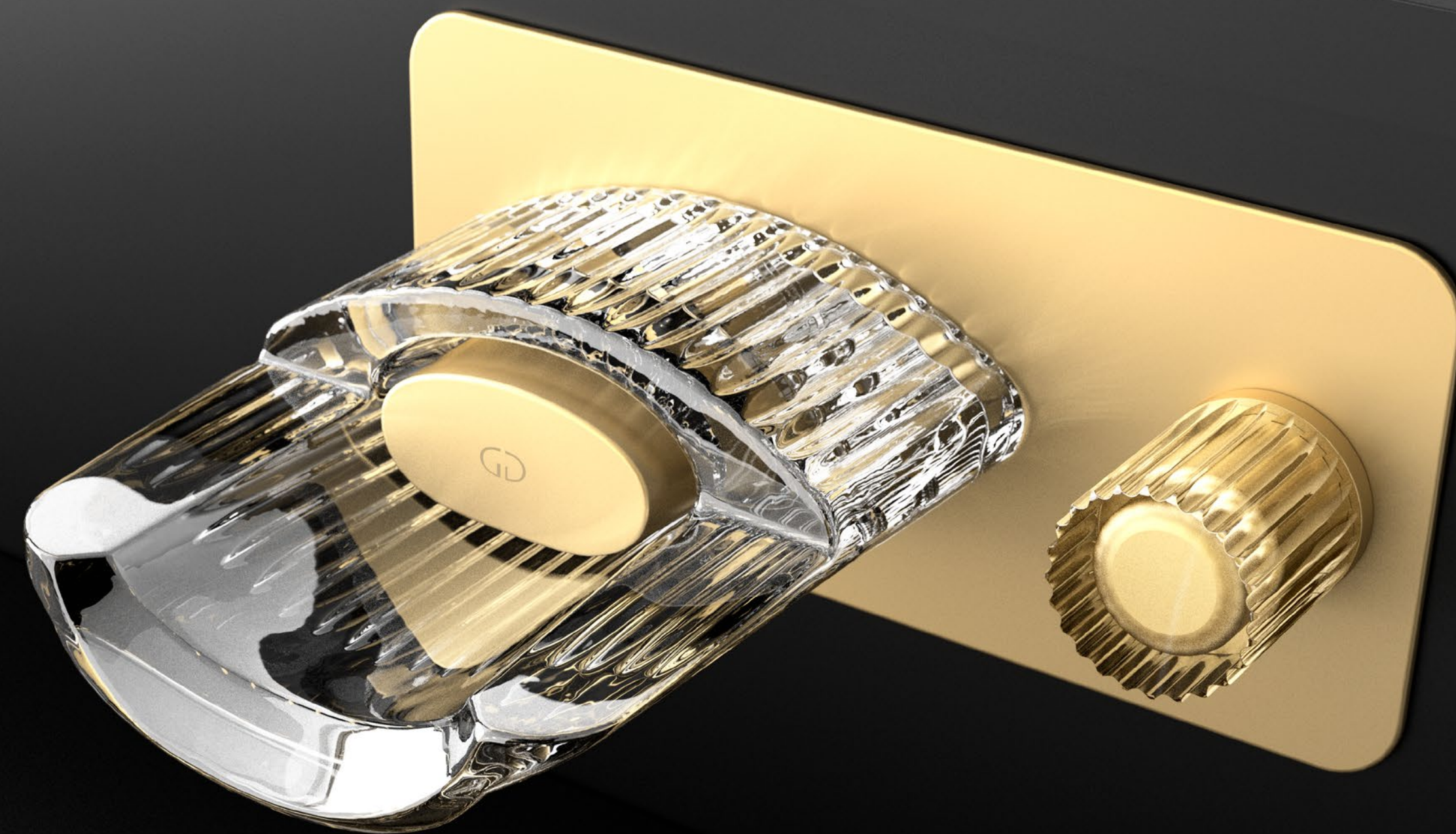


# CWF CLIVIA

Rubinetto a parete in cristallo trasparente, maniglia in cristallo trasparente/oro mat e ottone finitura satin gold  
*Wall-mounted faucet in clear crystal, with handle in clear/mat gold crystal and satin gold finish brass*  
CRYSTAL WATER FALL CLIVIA MONO - code **CWFLITGDMF19**

Lavabo sottopiano in cristallo oro metal  
*Crystal undermount washbasin in gold metal finish*  
TEKNO METAL 40 SOTTO - code **TEKNO40SGD**

Piletta a scarico libero finitura satin gold  
*Free flow waste in satin gold finish*  
- code **SCGDS**





# CWF SLICK

Rubinetto a parete in cristallo trasparente, maniglia in cristallo trasparente/argento e ottone finitura cromo  
*Wall-mounted faucet in clear crystal, with handle in clear/silver crystal and chrome finish brass*  
CRYSTAL WATER FALL SLICK MONO - code CWFSLITSLF4

Lavabo in cristallo trasparente  
*Clear crystal washbasin*  
FLOU - code FLOUT01

Piletta a scarico libero finitura cromo  
*Free flow waste in chrome finish*  
- code SCCR

Base anello in ottone finitura cromo  
*Base ring in chrome finish brass*  
- code ANF4

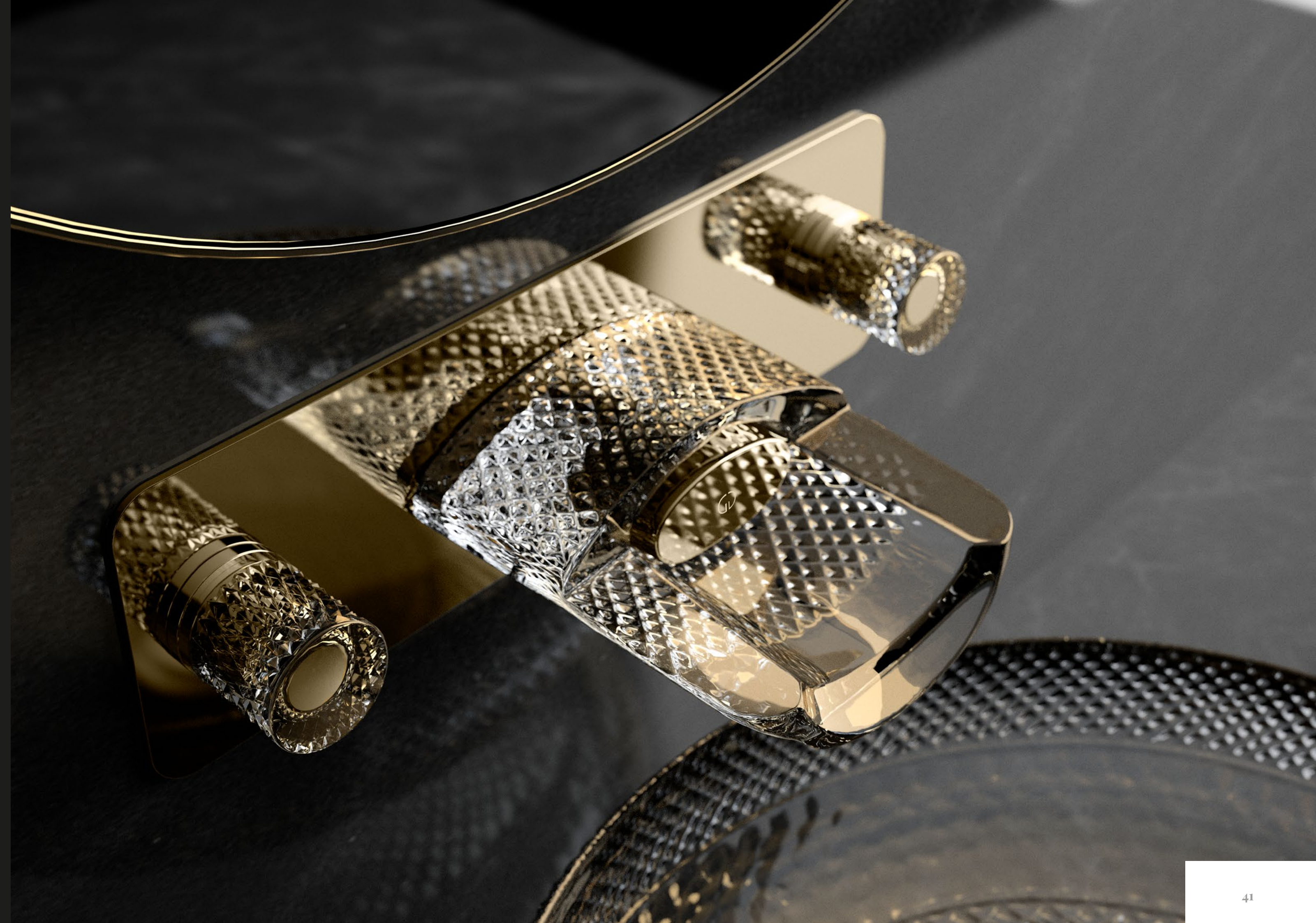




# CWF RAMADA

Rubinetto a parete in cristallo trasparente, doppia maniglia in cristallo trasparente/oro e ottone finitura oro lucido  
*Wall-mounted faucet in clear crystal, with two handles in clear/gold crystal and glossy gold finish brass*  
CRYSTAL WATER FALL RAMADA DOUBLE - code **CWF2RAMTGDF3**

Lavabo in cristallo trasparente con piletta a scarico libero e base anello finitura oro lucido  
*Clear crystal washbasin with free flow waste and base ring in glossy gold finish*  
SCENIC RAMADA - code **SCENICRAMT01F3**





# CWF SOLE

Rubinetto a parete in cristallo trasparente, doppia maniglia in cristallo trasparente/oro mat e ottone finitura satin gold  
*Wall-mounted faucet in clear crystal, with two handles in clear/mat gold crystal and satin gold finish brass*  
CRYSTAL WATER FALL SOLE DOUBLE - code **CWF2SOLETGDMF19**

Lavabo in cristallo trasparente con piletta a scarico libero finitura satin gold  
*Clear crystal washbasin with free flow waste in satin gold finish*  
VOLE SOLE - code **VOLESOLET01GDS**





# CRYSTAL WATER FALL MONO

Rubinetto a parete con singola maniglia a comando progressivo in cristallo, montati su piastra rettangolare in metallo. Bocca e maniglia sono realizzate in cristallo trasparente, molate interamente a mano con mole a pietra. I componenti in metallo sono prodotti in ottone CW617N certificato, disponibili in 3 finiture.

## CARATTERISTICHE TECNICHE:

- Applicazione: Lavabo da appoggio o sottopiano
- Rubinetto a parete per lavabi senza troppopieno
- Sporgenza bocca 157 mm
- Maniglia a comando progressivo realizzata in cristallo con basetta in ottone

## CERTIFICAZIONI:

OTTONE EU CW617N  
Corpo miscelatore incasso Made in Italy

Su specifica richiesta, il prodotto può essere realizzato in ottone certificato USA CW511L o INOX EN 10204 / 3.1

*Tutti i prodotti testati sotto pressione. Pezzi di ricambio, per cristallo e componentistica in ottone, disponibili su richiesta. Si consiglia l'installazione di rubinetti sottolavabo con filtri e chiusura, per consentire l'attività di manutenzione, senza dover ricorrere alla chiusura dell'allaccio generale dell'acqua.*

*Wall-mounted tap with single control handle in crystal, mounted on a rectangular metal plate. Spout and handle are fashioned from clear crystal, entirely hand-cut on stone. Brass metal components are CW617N certified and available in 3 finishes.*

## TECHNICAL CHARACTERISTICS:

- Application: with countertop or undermount basins
- Wall-mounted tap for washbasins without overflow
- Spout projection 157 mm
- Single control handle fashioned from crystal on brass base

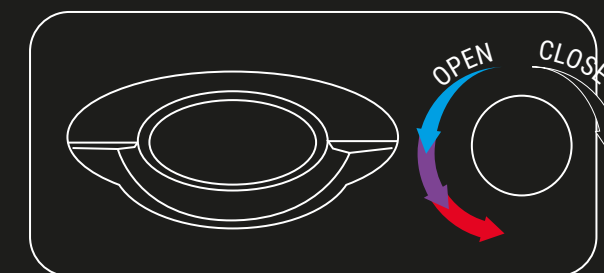
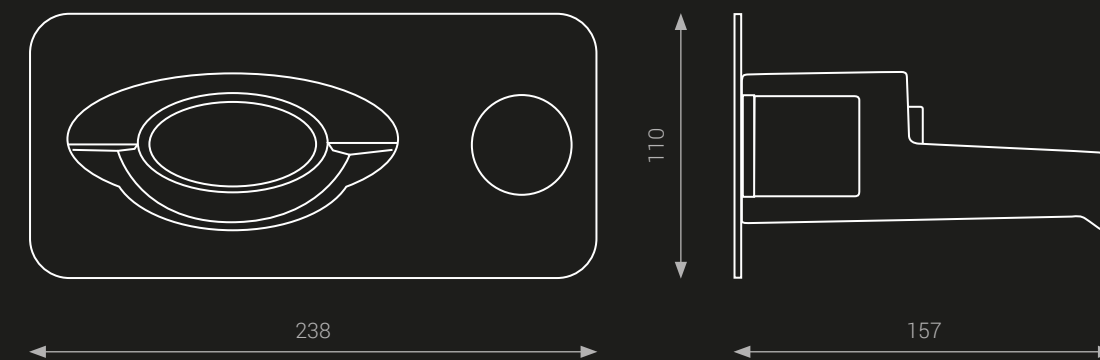
## CERTIFICATIONS

BRASS EU CW617N  
Built-in mixer body Made in Italy

*On request, the product can be made from USA CW511L certified brass or INOX EN 10204 / 3.1*

*All products have been pressure tested. Both the crystal and brass spare-part components are available on request. An installation complete with filters and isolation connectors is recommended to enable maintenance without the need to close off the main water supply.*

Monocomando progressivo *Progressive single handle*



# CRYSTAL WATER FALL DOUBLE

Rubinetto a parete con doppia maniglia in cristallo, montati su piastra rettangolare in metallo. Bocca e maniglie sono realizzate in cristallo trasparente, molate interamente a mano con mole a pietra. I componenti in metallo sono prodotti in ottone CW617N certificato, disponibili in 3 finiture.

## CARATTERISTICHE TECNICHE:

- Applicazione: Lavabo da appoggio o sottopiano
- Rubinetto a parete per lavabi senza troppopieno
- Sporgenza bocca 157 mm
- Doppia maniglia in cristallo con basetta in ottone

## CERTIFICAZIONI:

OTTONE EU CW617N  
Corpo miscelatore incasso Made in Italy

Su specifica richiesta, il prodotto può essere realizzato in ottone certificato USA CW511L o INOX EN 10204 / 3.1

*Tutti i prodotti testati sotto pressione. Pezzi di ricambio, per cristallo e componentistica in ottone, disponibili su richiesta. Si consiglia l'installazione di rubinetti sottolavabo con filtri e chiusura, per consentire l'attività di manutenzione, senza dover ricorrere alla chiusura dell'allaccio generale dell'acqua.*

*Wall-mounted tap with two handles in crystal, mounted on a rectangular metal plate. Spout and handles are fashioned from clear crystal, entirely hand-cut on stone. Brass metal components are CW617N certified and available in 3 finishes.*

## TECHNICAL CHARACTERISTICS:

- Application: with countertop or undermount basins
- Wall-mounted tap for washbasins without overflow
- Spout projection 157 mm
- Two handles fashioned from crystal on brass base

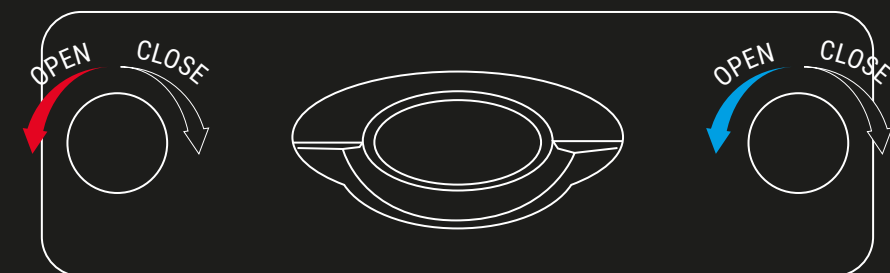
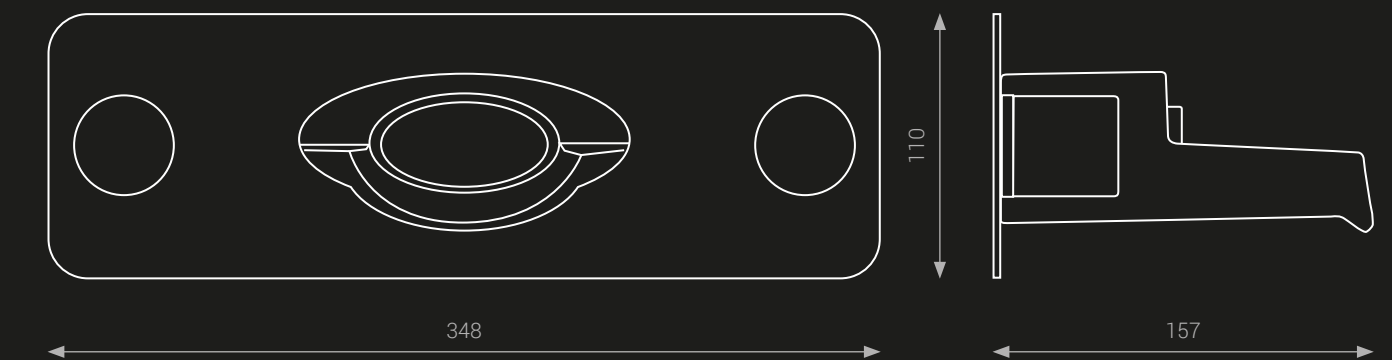
## CERTIFICATIONS

BRASS EU CW617N  
Built-in mixer body Made in Italy

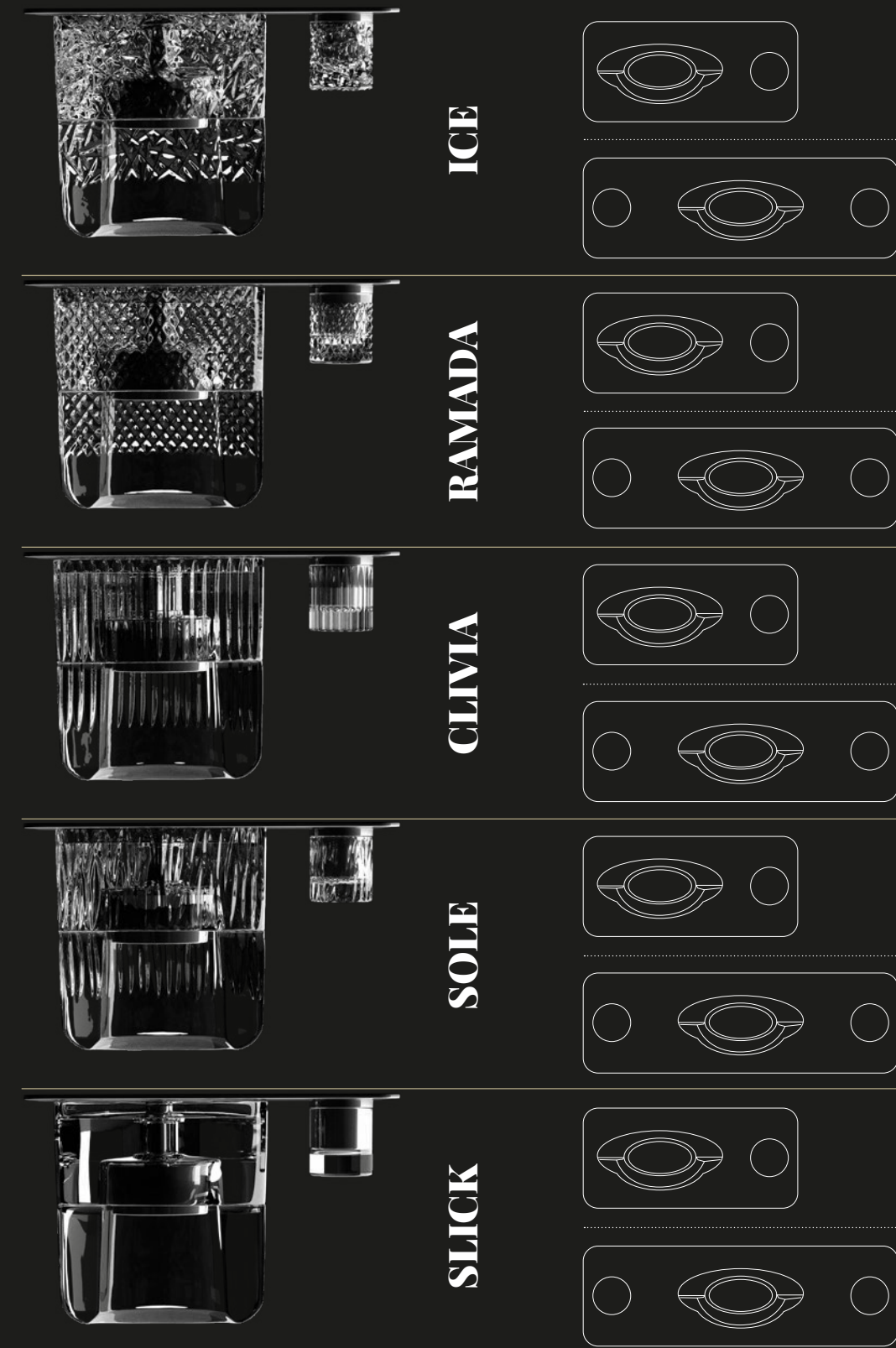
*On request, the product can be made from USA CW511L certified brass or INOX EN 10204 / 3.1*

*All products have been pressure tested. Both the crystal and brass spare-part components are available on request. An installation complete with filters and isolation connectors is recommended to enable maintenance without the need to close off the main water supply.*

Doppio comando *Double handles*



# CRYSTAL WATER FALL



**chrome**  
F4

clear/chrome  
CWFICETSLF4

clear/chrome  
CWF2ICETSLF4

clear/chrome  
CWF2ICETSLF4

clear/chrome  
CWF2RAMTSLF4

clear/chrome  
CWFCLITSLF4

clear/chrome  
CWF2CLITSLF4

clear/chrome  
CWF2SOLETSLF4

clear/chrome  
CWF2SOLETSLF4

clear/chrome  
CWFSLITSLF4

clear/chrome  
CWF2SLITSLF4



**gold**  
F3

clear/gold  
CWFICETGDF3

clear/gold  
CWF2ICETGDF3

clear/gold  
CWF2ICETGDF3

clear/gold  
CWF2RAMTGDF3

clear/gold  
CWFCLITGDF3

clear/gold  
CWF2CLITGDF3

clear/gold  
CWF2SOLETGDF3

clear/gold  
CWF2SOLETGDF3

clear/gold  
CWFSLITGDF3

clear/gold  
CWF2SLITGDF3



**satin gold**  
F19

clear/satin gold  
CWFICETGDMF19

clear/satin gold  
CWF2ICETGDMF19

clear/satin gold  
CWF2ICETGDMF19

clear/satin gold  
CWF2RAMTGDMF19

clear/satin gold  
CWFCLITGDMF19

clear/satin gold  
CWF2CLITGDMF19

clear/satin gold  
CWF2SOLETGDMF19

clear/satin gold  
CWF2SOLETGDMF19

clear/satin gold  
CWFSLITGDMF19

clear/satin gold  
CWF2SLITGDMF19

# ITALIAN CRYSTAL ARTISAN CRAFTED

L'inconfondibile unione fra design e artigianato caratterizza i prodotti del brand Glass Design.

Collezioni esclusive comprendono oggetti unici, realizzati con cura, portando avanti una tradizione artigianale inimitabile.

Forme e colori che prendono vita da un'interminabile passione per l'eccellenza.

*The synergy between design and craftsmanship is synonymous with the Glass Design brand.*

*Exclusive collections comprising unique items, all made with the utmost of care, embody and carry forward a wealth of artisanal tradition.*

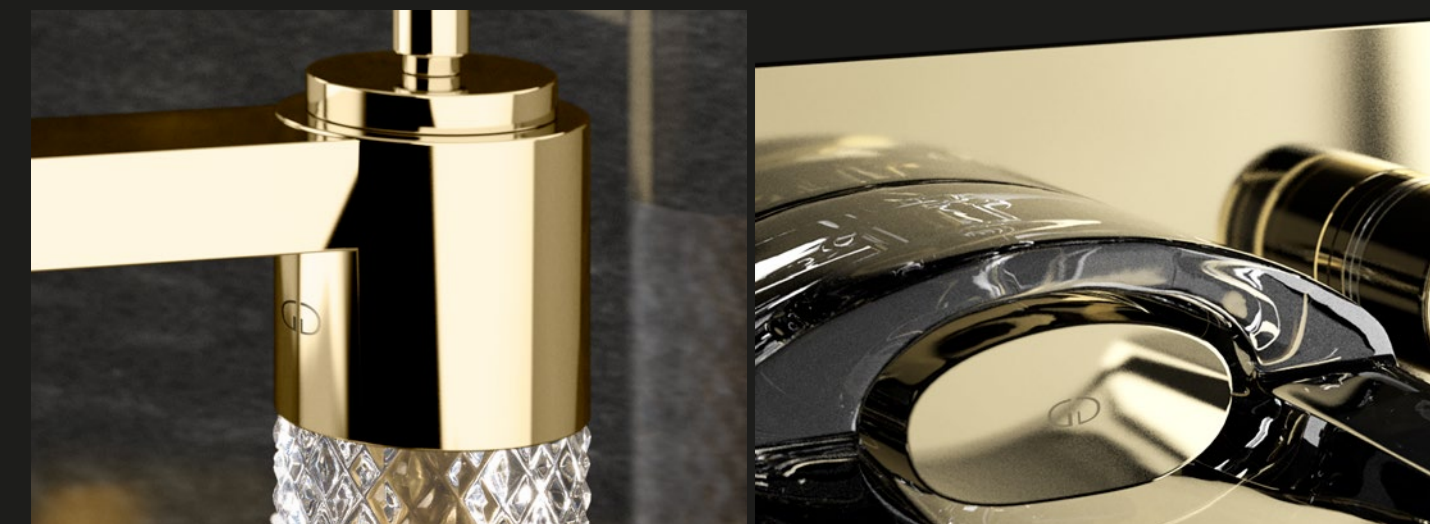
*Shapes and colours come to life, signalling an endless passion for excellence.*



# SIGNATURE STYLE

Le nostre collezioni, frutto di un'incessante ricerca creativa e tecnologica, sono valorizzate da un sigillo che ne garantisce originalità ed eleganza.

*Our collections, the result of on-going creative and technological research, feature our company marque which demonstrates their originality and elegance.*





CERTIFICAZIONI  
CERTIFICATIONS



Made in Italy

**GLASS DESIGN s.r.l.**  
Via Limitese, 122/124 - 50053 Vinci (Firenze) ITALY  
tel. +39 0571 902311 / 902501 - Fax +39 0571 902312  
glassdesign@glassdesign.it - www.glassdesign.it

Prodotti coperti da brevetti internazionali  
Products covered by international patents

*Copyright © Glass Design srl. Tutti i diritti riservati - All rights reserved.*

 Graphic and visual design:  
**less** [info@less.land](mailto:info@less.land)

stampato su carta certificata FSC®



Questo prodotto è composto da materiale  
che proviene da foreste ben gestite, foreste  
certificate FSC® e da altre fonti controllate.

Crystal Water Collection

**CWT**

**CWF**



